



# THE BRADFORD BRIDGE

Volume 9, Number 8; Issue 98

August 1999

## "Party People" of Bradford, Newbury, Sutton, and Warner, Needed

If you enjoy planning parties and holiday activities (and attending them, of course) please come to an open forum on Thursday, August 19, 1999, at 7pm at the vestry of the First Baptist Church in Bradford.

Join a discussion of an area-wide New Year's week-end celebration in and around the new Bradford Area Community Center. We need artistic folk for decorating, business types to handle ticket sales in each town, menu-minded gourmet groupies to locate caterers, etc., etc.; local talent for entertainment; creative minds to present unique ideas for indoor/ outdoor events.

Presently the search is on for a small dance band capable of playing a wide variety of tunes ranging from the '40s to '90s for a New Year's Eve dinner-dance. Sound like fun? COME!!

Add your ideas to produce a roster of exciting events to welcome the new century and millennium, and provide some wonderful memories for yourselves.

—Phyllis G. Whall for the BACC Governance Board

## Tour de Stu

The Tour de Stu is a non-profit bike tour that raises scholarship money for all Kearsarge area students, and also benefits the American Cancer Society.

On September 12, 1998, four bicyclists left Melrose, MA and headed north for New London, NH. This was the route of the first Tour de Stu, a hundred-mile, two-day bike trip that would benefit the Stuart F. Sidmore

TOUR Continued on page 13



## New "Old Glory" for Bradford

The week before the Fourth of July, a gentleman entered the Town Hall and pointed out to the Selectmen that the present American flag should be replaced. How many times had they walked into the Town Hall and never noticed the condition of the flag? He was right. We were approaching the birthday of our country and no one, except this gentleman, had taken the time to look up and then come into the Town Hall and say, "How about getting a new flag?"

The wheels were put into motion. Senator Judd Gregg's office in Concord was contacted and asked if they could help us get a flag. To the Selectmen's delight, the answer was "Yes." Not only could they help us get a flag, but one that had flown over our nation's Capitol in Bradford's name!

The Selectmen's office was notified the next day that the flag had been flown and would be shipped as expeditiously as possible and would be available for pick up at Senator Gregg's office in time for the Fourth of July.

At 2:00pm on July 4, 1999, the old flag was lowered with a dignified ceremony by the Color Guard of the Marine Corps League. As the Star Spangled Banner was being played over the speakers in the steeple of the Baptist Church, the new flag was raised in true glory. It was a beautiful sight. The next time you go by the Bradford Town Hall, look up. Thank you to that gentleman who took the time to stop by.

—Dick Vitale

## Lettvin & Friends Concerts

On Saturday, August 21 and Sunday, August 22, the Union Congregational Society will present the annual *Lettvin and Friends* concerts. It is an opportunity to hear talented musicians in the intimate atmosphere of the historic Bradford Center Meeting House. Proceeds from the concerts are used for the restoration and preservation of the building.

Ted Lettvin, a part-time Bradford resident who began the annual benefit concerts several years ago, is recuperating from surgery and will not be playing this year. However, the tradition will continue as his friends and colleagues share their love of music in two different programs. On Saturday at 8:00pm, Marija Ilic (piano) and Hanfang Zhang (violin) will perform sonatas by Mozart and Brahms and a rhapsody by Bartok. At the 3:00pm matinee on Sunday, pianist Arlene Kies and bass-baritone David Ripley will perform songs by Schubert, Brahms, Faure, Duparc and Ives. Kies and violinist Danwen Jiang will perform a Beethoven sonata.

A donation of \$6.50 in advance or \$7.50 at the door is requested. Tickets are available at Dodge's Store or by calling 938-2435.

—Lyn Betz

*Living in Bradford*

**Bradford Artists & Artisans Exhibit**

**August 7 & 8**

**Elementary School**

**see page 6 for more info**

# Obituary

SCOTT J. MACNEIL

Scott J. MacNeil, 47, of Bradford, formerly of Gloucester, MA, died of cardiac arrest July 8, at Concord Hospital. Mr. MacNeil was born in Gloucester on April 27, 1952, to Theresa C. MacNeil of Gloucester and the late Richard D. MacNeil. He resided in Gloucester for many years.

Mr. MacNeil had many different interests, including a love of the ocean, where he enjoyed lobstering and clamming off the coast of Gloucester. He also enjoyed music and jewelry making, and had worked as a silversmith in Boston and in Bradford.

He is survived by his mother, Theresa MacNeil of Gloucester, his brother, Richard D., husband of Carol (Parsons) MacNeil, of Gloucester; his grandmother Mildred MacNeil of Gloucester; a niece, Maris B. MacNeil of Gloucester; nephews Michael and Mac Appleton, both of Gloucester; his lifelong companion, Debbie Gurule of Bradford; many aunts, uncles, cousins; and his faithful dog and pal, "Moon."

## Notice

The Selectmen's Office will be closed on August 4 and August 11.

### SUTTON MILLS



Sutton. Farm colonial; large eat-in kitchen, dining room, living room, large bedroom and full bath on the first floor. Second floor has two large bedrooms and 3/4 bath. 8-27 Porch. Large Barn. FHW Oil Heat. Artesian well. In-town setting. **\$105,000**

# STEWART AGENCY

Main Street, Bradford  
938-2255 or 938-2256



## Lake Todd Announces the Birth of Two Loon Chicks

One loon chick was lost to us, but we still have one adult pair and a chick. Studies show that loon chicks have less than a ten-percent chance of surviving to become breeding adults. We have to strive to protect them as much as possible. New Hampshire is the first state in the nation to effectively pass legislation to ban the use of small lead sinkers and jigs in lakes and ponds. The ban becomes effective in January 2000. These lead sinkers should be removed from all tackle boxes. Lead is deadly to loons and water birds.

According to a Tufts University study (1989-1997), "Loon population in 1997 in New Hampshire was approximately 576. Eleven of 16 dead adult loons died from ingesting lead sinkers and jigs." Non-lead alternatives can be used to protect the loons and are available in sporting goods departments.

The common loon is listed as a threatened species in New Hampshire and is protected by state and federal laws. Loons should be observed from afar and never chased by a boat nor approached too closely. Causes of mortality in adult loons are lead, boat trauma, parasites, aspergillosis, infection, rogue loons, fishing line and gunshot.

We're lucky to hear the call of the loon here on Lake Todd and we ask full cooperation in protecting these beautiful birds from extinction. We must give them free rein to live in safety on Lake Todd each year. Oliver Austin writes: "No one who has ever heard the loon's music—the mournful far-carrying call notes and the uninhibited, cacophonous, crazy laughter—can ever forget it."

—Allene S. Hamilton

Loon Preservation Committee 476-5666  
NH Fish and Game Dept. 271-3211.

## WALCO MECHANICAL CO.

REFRIGERATION, HEATING,  
AIR CONDITIONING, ELECTRICAL CONTRACTORS  
COMMERCIAL • INDUSTRIAL • RESIDENTIAL

SERVICE • SALES • INSTALLATION  
MAINTENANCE PROGRAMS

SYSTEM EVALUATIONS

# 938-2926

BRADFORD, NEW HAMPSHIRE

community center  
youth news

Calling all Youth that are interested in visiting other Youth/Teen Centers in August: Please call Kim Pothier at 938-5195. Site visits will be scheduled this month. Our Center will be opening in late Fall, and the time to get involved is now! A Youth Planning session will be held on August 25 at 7:00pm at the Town Hall. See you there. For more information please call 938-2562.

—Carol Conforti-Adams

The Bradford Bridge  
P.O. Box 463  
Bradford, NH 03221  
Telephone: 603-938-5029  
FAX: 603-938-5702  
Email: bradfordbridge@conknet.com

### VOLUNTEER STAFF:

Lyn Betz, Editor & Publisher  
Meg Fearnley, Assistant Editor  
Denise Fairbank, Ad Manager  
Debbie Lamach, Business Manager  
Carey Rodd, Classified Ad Manager  
Betty Hague, Calendar Editor  
Vern & Marion Hall, Subscriptions  
Gene Schmidt, Advertising Sales  
Mark Fairbank, Advertising Sales  
John & Elinor Robie, Distribution  
Milly Kittredge, Archivist

### Subscription Information

For those wishing to receive the Bradford Bridge by mail, the annual subscription price is \$12 to cover the cost of mailing. To subscribe, please send a check to the address above.

### Advertising

The Bradford Bridge is a free community newspaper supported by advertisers. To place an ad, call Denise Fairbank at 938-2973 or send a FAX to 938-5263. Ad deadline is August 20.

### Submissions

The Bradford Bridge is written by neighbors, for neighbors. Anyone is welcome to submit articles and/or photographs of interest to the community. Send articles or letters to Lyn Betz at the address, FAX number or e-mail address above by August 20.

**Simonds '99 Reunion**

Before there was a Regional High School, there was a regional high school. It was Simonds Free High School, with an endowment begun by Franklin and Abigail Simonds of Warner. The school provided free tuition for town youngsters and admitted tuition pupils from surrounding towns. It was dedicated in 1871 and functioned for 99 years.

Young people ("ladies and gentlemen" in 1873) from Bradford, Newbury, Sutton and Webster got a secondary education there. Students came to school in the early days by foot, horse or oxen, then in autos of various vintages and eventually by train and bus. They experienced heat from the pot bellied stove in the back aggi building, electric lights, classes in the Odd Fellows Hall, trips to the Town Hall for hot lunch and the conversion of a stable/woodworking shop to a gym. The course offerings varied from Moral Philosophy, Cicero, Anabasis with Greek Prose, and Latin to Home Economics, Industrial Arts and Business, changing to meet the times. Many students from out of town boarded with families in Warner to be near transportation during the week, doing chores for part of the board. They went home on the weekends. The train down from Newbury and Bradford took many students to Warner.

The idea of celebrating 99 years of Simonds in '99 was suggested by Bill Fortune. This evolved into a committee of alumni and former instructors. It culminated in a three-day celebration July 23-25 with 450 people attending. Bradford nearly swept the field of superlatives with Paul Gove as the oldest male graduate (class of 1928) and his sister, Dorothy Gove Sawyer as the oldest female graduate (1922). The next generations of their families were nearly all in attendance,

too. Gilbert Rund (1951) traveled the furthest, from Washington State. On the organizing committee were Mickey Ayer Allen (1956) and Bob Perron (1961).

It was wonderful to become reacquainted with so many Bradford people—Beatrice Brown Fletcher, the Whitehead sisters, Mary Sargent, Jack Thompson, Sammy Lowe, Jane Messer, Claire Wright, Allison McGrail and many more. Some families of alumni spanned two and three generations!

Simonds is now an elementary school. Kearsarge is the high school. Time has passed and the days of a small high school have gone. It was a fine reunion. It was found that some of the SFHS attendees had been missed, a regretful shortcoming, which everyone is encouraged to correct in the future.

—Milly Kittredge

**News from the Town Clerk and Tax Collector's Office**

May 26. Rebecca Ellen Bailey was born to Daniel and Michele in Lebanon.

July 8. Gretchen Cressy died in Concord.

July 14. Carolyn Tennyson died in Concord.

July 17. Stephen Conkey and Claire Lampus were married in Bradford.

July 29. Timothy Sullivan died in Concord.

July 29. Alexander Sunborn-Moody died in Concord.

OFFICE HOURS: Monday, 2:00-7:00pm; Tuesday, 8:00-5:00pm; Friday, 8:00-noon. Phone 938-2288, 938-2094.

—Sue Pehrson

July 29, 1999

Dear Readers,

My children are in bed sleeping as I work to complete this month's *Bridge*, but I am painfully aware that three Bradford teenagers are not where they should be. I learned early this morning of the automobile accident that claimed the lives of Alex Sanborn-Moody and Tim Sullivan. Amelia Szymciewicz is at Concord Hospital in critical condition with a head injury. Everyone I have talked to today is in shock, and we are all trying to think of concrete ways we can help.

As the editor of the town's paper, I hope I can help by not "reporting the story" while acknowledging the tremendously painful blow to our community. The *Bridge* was fairly far from finished when I got the news, and rather than fill the still-empty spaces, I will leave them this month. They are moments of silence, holes in our lives.

Our thoughts and prayers are with all three families.

Lyn Betz

**NEW KEARSARGE CORPORATION**

- REELS • PALLETS • BOXES •
- SPECIALTY WOOD PRODUCTS •

**NKC** Breezy Hill Road, Bradford

**BALD SUNAPEE FLORIST & GARDEN CENTER**

Route 103—Newbury Harbor Phone/FAX 763-4551  
Monday-Saturday 9-6 and Sunday 9-4



IT'S AUGUST AND TIME FOR THE ANNUAL CRAFTS FAIR  
WELCOME BACK CRAFTSMEN!

IT'S ALSO THE SEASON FOR US TO HAVE FRESH NATIVE CORN!!!

Our Florist and gift shop has a variety of fresh cut flowers, dried flowers and wreaths, green and blooming house plants, photo frames, prints and more!

Outside our yard is still filled with perennials, herbs, vines, shrubs and trees. MUMS are coming soon—along with fall asters, cabbage and kale.

Fresh homemade pies will be available the week of the fair, August 7-15.  
COME ON IN, WE'RE RIGHT ON THE WAY TO MT. SUNAPEE!!

Fresh Cut Flowers, Arrangements, Local Delivery & Flower Wire Service

**The Gathering Place**  
Gift Shop  
938-5790

OPEN Tues 12-4, Wed-Fri 12-6, Sat 10-5

**Gifts for Body--Mind--Spirit**

- Books \* Music \* Candles
- Herbal Teas \* Flower Essences
- Crystals \* Jewelry
- Reiki by Appointment
- Peg Leighton~Reiki Master

Workshops to Encourage the Journey Within  
~stop by to pick up current flyer~

128 East Main St Bradford



# Letters

To the editor:

The Bradford Fire Department wishes to thank all the organizations and individuals that helped make the annual Fourth of July Celebration a huge success.

*Chief Mark Goldberg*

*Letters to the editor should be no more than 400 words and may be edited for clarity and content. All letters must be signed and include a telephone number for verification.*

## Pickman Chairs Road Committee

The Selectmen named Dave Pickman as Chair of the Road Committee following the resignation of Keith Stebbings who has served the Committee as a member since its formation and as Chair for the past two years.

At the July meeting, Selectman Chris Frey asked for comments from the Committee about a proposed plan to address drainage problems on Main Street at the site of the new Pizza Chef Restaurant. Frey will determine whether an existing drain line under Main Street is blocked and proceed from there to work on a solution. Frey also updated the Committee on roadwork underway. West Road requires more blasting and preparation of the roadbed for paving. The work will be completed this season. Portions of East Washington Road have been ground and will be allowed to rest until further action next year.

*—Marcia Keller*

## Doings in Bradford

We have won! The Governor has signed HB 265 into law! After testifying before the House Finance Committee, meeting with some of the Selectmen from Warner and Sutton, meeting with the School Board and then meeting with Senator Trombly and Representatives French and Rodd at the Town Hall and then making phone calls to key representatives, we did it. The legislature listened to the Selectmen from Bradford and surrounding towns and understood what was "fair." If this had not been done, the "donor towns" would have shared in the education grant, which we felt was rightfully ours. The State will credit the education grant money to our account. This will reduce our taxes in November. We will not know by how much until we get final figures from the school district as to what we will be paying them this year.

Other things are happening around town. We hope to make this a regular feature in the Bradford Bridge so townspeople will understand what is being done in town. Grinding of East Washington Road has started. The blacktop has been taken up and ground into the roadbed. Then the road is graded. You cannot just turn around and pave the road. Frost heaves and shifting of the material would destroy the paving job if it were done too soon. The material in the road has to compact. This usually takes over a year to happen. When it is determined that the roadbed is ready, it will be paved. The process has begun.

West Road has been worked on for the last couple of months. Anyone who has been there has seen the size of the boulders that have been dug up from the roadbed. Several of these have been dynamited to allow their removal. Again, preparation is the

key. The town has rented an excavator to allow the process to move along as quickly as possible. Our time frame will allow us (barring unforeseen circumstances) to pave West Road before winter sets in.

The Bradford Area Community Center is moving right along. Construction is continuing and is monitored by Ev Kittredge and Selectman Chris Frey. The BCC is active in additional fundraising (remember, "Buy a Brick") and grant writing. The Governance Board has been meeting regularly with Carol Adams.

The Library is coming along. The concrete for the extended part of the building has been poured and framing is in progress.

The Pizza Chef Restaurant seems to be growing before our eyes. It will be an asset to downtown Bradford. This is all for now. We will continue to bring you up to date as things progress.

*—Dick Vitale for the Board of Selectmen*

## Bradford Artists & Artisans 1999 Exhibit August 7 & 8

The 1999 Bradford Artists & Artisans Exhibition, sponsored by the Bradford Women's Club, will open on Saturday, August 7 at 10:00am at the Bradford Elementary School. The non-juried exhibit features the art and craft work from more than 30 artists and artisans including: fine furniture, stained glass, photography, painting, quilts, maple syrup, sculpture, Nantucket baskets, weaving, hooked rugs, reverse painting on glass, knitting, slate signs, headwork, poetry, pottery and printmaking—all from the Bradford arts community. The exhibit is open on August 7 and 8 from 10:00am to 4:00pm.

A "High Wheel and Low Wheel" Spinning Demonstration by spinners Janet Sillars and Meg Fearnley will be held during a Meet the Artists Reception on Sunday, August 8 from 2:00 to 4:00pm. Refreshments will be served during the "open to the public" reception. For more information call Marj Messer at 938-5355 or Amy Blitzer at 938-5952.

*—Audrey Sylvester*

**SUNSHINE FARM**



RT. 103, BRADFORD, NH  
938-2716

Perley & Marcia Strout  
Open Wednesday thru Sunday 9-5

**Moving?  
Downsizing?  
Cleaning up?**

We are always looking for  
quality antiques and collectibles.

Member, Bradford Business Association

428-7076

*Wright Travel*

WORLDWIDE TRAVEL ARRANGEMENTS  
Henniker Mini-Mall Nancy Wright  
Main St., Henniker Manager

**Carpet ♦ Vinyl ♦ Ceramic Tile ♦ Hardwood ♦ Area Rugs**

---

**NEW LONDON ♦ FLOORCRAFT**

---

*and Creative Kitchens*

**Carl & Gail Olson**  
Route 11, Wilmot

826-2800  
800-870-4848

### Brown Memorial Library Update

Library expansion is progressing rapidly. The foundation for the new construction has been poured and the framing is under-way. We are looking forward to the grand opening of the expanded building in mid-to-late November—watch the Bridge for more details.

Brown Memorial Library will be closing on August 28 for approximately eight weeks to allow time for renovations to the existing building and to connect the new construction to the old. During the end of August and early September all the books and furnishings will be packed up and moved into a storage trailer. If you would like to volunteer to help on packing days, please contact the librarian, Maggi Ainslie, at 938-5562 for more details. Also, to help reduce the number of books that have to be packed, beginning August 1, we invite all BML cardholders to take home a box or two of books for temporary storage.

During the time our library is closed, Bradford residents who hold valid library cards may use them at either Newbury Library or Hopkinton Library. Both are beautiful new expanded libraries and they have generously agreed to honor BML cards until we reopen. Please be sure you have your BML card with you when you visit these libraries—they will *not* be able to lend you books without it. If you can't find your card or it has expired, please stop by BML before August 28 to pick up a new one.

—The Brown Memorial Library Board of Trustees

### Bradford Area Community Center

Most of what is happening at the Bradford Area Community Center (BACC) construction site is going on at the back of the building. A rear addition to house the principal entrance with lobbies and handicapped access is progressing. The interior of the upper level has been roughed in and this week insulation and sheet rock will be installed in the lower level. The deck that runs from the kindergarten wing to the rear of the building is in the construction stage. It really is exciting to see all the good things happening on Main Street. We are very grateful to our long-suffering neighbors, especially the Cilleys, the Coyles and Sue Dodge. They have had to live with all the mess that goes along with a construction project and have been very tolerant. It will get better; there will be green grass and trees in front of the building. Believe!

The Community Development Finance Authority has announced an award of \$50,000 to the Community Center project. This award is a very helpful tool in raising money in the corporate sector. The Bradford Community Corporation must first secure the corporate gift in order to receive the CDFA funds. A business making a \$10,000 cash donation (through CDFA) on behalf of the Corporation will receive a tax credit in the amount of \$7,500 against a number of State business taxes. The CDFA gives the Corporation \$8,000 toward the Bradford Area Community Center renovation project. (20% of the donation remains with the CDFA as the cost of administration, AND the CDFA has awarded our project a \$12,000 discretionary fund to provide staff support.) The tax credit makes a corporate gift very appealing to businesses and, therefore, increases our

likelihood of receiving contributions from the business community. It's a good thing. If your business has obligation under the business profits tax, enterprise tax, or the insurance premium tax, and would be interested in this CDFA investment program, please contact Mel Pfeifle, Vice Chair of the Corporation.

The BACC Governance Board is working over the summer to produce the guidelines for operating the Center—"Policy and Procedures." They are making decisions on paint colors and floor treatments and are involved in the construction process. Programs are coordinated by Carol Adams. Everything points to opening in the fall.

Thanks to over 100 people who have responded to the "Buy a Building Brick for Bradford" campaign. The campaign has had a better than 5% return to date. That's not bad for a broad mail appeal. It is this campaign and the involvement of many, however, that will close the funding gap and make the dream a reality. Anyone who did not receive the first appeal in the mail (or may have mislaid it), please clip out and return the form printed at the bottom of this page with your contribution and your commitment to the future health and welfare of all who live in the Bradford area.

—Nancy Hibbard



**YES! I will help complete the renovation of the Bradford Area Community Center.**

Name \_\_\_\_\_

Phone \_\_\_\_\_

Address \_\_\_\_\_

\_\_\_\_\_ As a Contributor (with my name on a scroll) \$10 or more

\_\_\_\_\_ As a Friend (with a star beside my name on a scroll) \$50 or more

\_\_\_\_\_ As a Sponsor (with my name inscribed on a building brick) \$100 or more

\_\_\_\_\_ As a Benefactor (with my name on a permanent plaque) \$500 or more

\_\_\_\_\_ I will pledge \$\_\_\_\_\_ a month (in 1999) for a total gift of \$\_\_\_\_\_

\_\_\_\_\_ I will make a Leadership gift of \$1,000 or more. Please contact me.

Amount enclosed \$\_\_\_\_\_

Please make checks payable to: Bradford Community Corporation and mail to: PO Box 436, Bradford NH 03221

**Will your PC Recognize the Right Century?**  
 Update easily with the  
**Centurion Y2K Rollover Card**  
**NOW at Dodges!**  
 Also check out our consignment used computers

**BRADFORD GENERAL STORE**  
 Since 1945

RF Dodge  
Computers

058 238

Video Pursuit



## Church News From Lynne E. Hubley

In keeping with tradition, our worship service for the last Sunday in August (August 29) will be held at the Bradford Center Meeting House at 10:00am.

The Food Pantry will be open Wednesday, August 18 from 6:00-7:00pm. Food is available to residents of Bradford who meet certain criteria. To find out if you qualify, please call the Church office at 938-5313.

Please note that Sunday school will start up again on Sunday, September 26. All classes will meet at 9:00am. We offer classes for ages four and up, as well as an adult class.

Many thanks to everyone who supported the Church fair. The youth group would like to extend a special thank you to Peter and Mary Beth Fenton of the Appleseed Restaurant for donating many of the ice cream sundae supplies. They are the best!



### Birth Announcement

Paul and Debbie Flinkstrom would like to announce the birth of their daughter Morgunne Emily. Born on July 7, 1999, she joins a brother, Garret Paul, 3.

Paternal grandparents are Hugo and Evelyn Flinkstrom of Bradford. Maternal grandparents are David and Janice Pickman of Bradford.

### Can You Help?

Wanted—information pertaining to the ownership of a large piece of yellow construction equipment driven through the covered bridge at approximately 10:00am on Thursday, July 22. The operator had a mustache. Please contact the Selectmen's Office or Police Department if you have any information. Your call will be treated confidentially.

### Bradford Country Squares

Sultry Night is the theme for the A-1/Plus Level square dance to be held by the Bradford Country Squares on Saturday, August 21 at the Town Hall. Dan Guin will call A-1 Level from 7:00pm until 8:00pm, and Plus Level from 8:00pm until 10:30pm. Sandi Simmons will cue. Casual dress allows for cool comfort. Admission is \$4 per person. For further information, call Bob or Shirley Trombley at 763-3044. Spectators are always welcome!

### Friends of Brown Memorial Library

The bus trip to the John Singer Sargent Exhibition at the Museum of Fine Arts in Boston will leave from the Bradford Elementary School at 7:30am on Saturday, August 14. A few tickets are still available. Call Dawn Rich at 938-2466 for more information. *Jeopardy*, a free summer reading program will continue on Wednesdays August 4 and August 11 from 2:00-3:00pm at the Library. Reading certificates and prizes will be given to all children participating.

—Audrey Sylvester

### MOTIVATEDSELLER



Charming antique home, 30 min. to Concord, 45 min. to Manchester, wonderful garden area, 3 car garage, level 1.5 acre lot, Kearsarge school district, 20 min. to the new Mt. Sunapee resort.

\$97,500

**Colby-Linehan**  
Real Estate, Inc.

P.O. Box 173  
Warner, NH 03278  
603-456-2344

### REACHING HANDS THRIFT SHOP

and Garage Sales



Proverbs  
31:20

Respectable Items  
at Reasonable Prices  
Off Old Warner Road,  
Bradford 938-2820

Great Weekly Specials  
M,Tu,W by chance; Th,Fri,Sat 10-4

Also IamNet—Internet  
Access & Marketing 938-2127

927-4973

Route 114  
North Sutton

### ALL & AWL REPAIR

Small Engine Sales & Service  
Tractors • Harness & Tack Repair  
Art, Kirk, Lynne & Kris Chadwick  
Hours: Mon-Fri 7:30-5:00, Sat til 1:00

### Your Computer ISP @IamNet, Inc.

"Your One Stop Internet Service and Support Shop" ★

"The Now Company that Cares". Plans start at 25 hours per month for only \$10.00. We do modems, repairs, memory, upgrades, NT networks, training. NeoSys Computers. Established 1978. Free start-up visit and computer tuneup.

[HTTP://IAMNOW.NET](http://IAMNOW.NET)

Web Hosting  
Web Design  
Web Marketing

938-2127

Service  
Support  
Solutions

Serving Bradford, Henniker,  
Newbury, Hillsboro, Newport  
Sunapee, Sutton and Warner

★ Fast 56K Service ★



## BWC Update

The Bradford Women's Club Float Committee for the Independence Day Parade can be proud of their efforts. We took home the Blue Ribbon as best float for a civic organization. Special thanks go to Jeanne Gaito, Jane Lucas and Don and Gerri Dickerson for the use of their truck and classic convertible. Thanks also go to Jane Lucas, Jeanne Gaito, Sophie Burke and their committee for the yummy sausage and pepper subs and meatball subs served at Brown Shattuck Field before the fireworks.

Several members of the Women's Club will be exhibiting their art and craft projects at the Bradford Artists and Artisans Exhibition on August 7 and 8 at the Bradford Elementary School. There is much talent in Bradford.

Thank you to Kathleen Bigford for a successful Swim Program. Close to 70 Bradford area children participated in the two-week program and were treated to a closing party.

On August 12 and 13 at 10:00am, all women are invited to attend a craft workshop for the Christmas Fair. Call Sue Vitale at 938-2852 for more information. There will be air conditioning and refreshments.

The Women's Club Yearbooks will be ready for distribution soon. Stay safe and cool for the rest of the summer.

--Suzanne C. Vitale, President



(left to right) Sue Vitale, Mary Margaret Pickman, Alma Clinton and Jane Lucas on the prizewinning BWC float

## Center School Alumni

The Center School alumni will meet on Sunday, August 29 from noon-3:00pm at the Center School. Allene Hamilton has made a great effort to contact everyone, but if anyone has been missed, please call her at 938-2318.



AUGUST 1-15

Canning supplies &  
Mrs. Wages Helpers

Salsa mix • Spaghetti mix • Pickle mix  
Ketchup mix • Pickling lime etc. etc.

AUGUST 16-31

Back to school wear

Carhartt • Sorel • Chippewa  
Outback • Fox River etc. etc.

Merrimack Farm & Country Store

Main Street, Box 154  
Bradford, New Hampshire  
(603) 938-2211

## Bowie's Market

126 East Main Street, Bradford, NH  
938-5533 • Fax 938-2009

**OPEN 7 DAYS:** Mon.-Thu. 5:30am-8:30pm  
Fri. & Sat. 5:30am-9:00pm  
Sundays 6:00am-8:00pm

### Your BBQ Headquarters

Choice Cuts for the Grill!  
Boneless Sirloin - Pork Chops  
Delmonico Steak - Chicken  
Burgers - Franks - Strip Steak

Party Platters, Cold Cuts, Snacks

Don't forget about Friday Night  
**Fried Chicken Dinner**  
**\$3.99**

### Bowie's Sub Base

Fabulous Steak & Cheese Subs  
Delicious Meatball & Sausage Subs  
Or Your choice from the Deli

### Friday Night Fish Fry!

Fried Seafood Dinners  
Clams - Shrimp  
Scallops - Haddock

COUPON

**Bowie's Breakfast Value Meal \$2.95**

Green Mountain Coffee (Medium)  
Breakfast Sandwich  
Hash Browns

## Senior Rally

The Senior Rally Council met on Saturday, July 24 to hear JoAnn Jordan from the NH Division of Elderly and Adult Services speak on *Aging, What is Normal, What is Not*. The presentation dispelled myths about aging, and related the positive aspects of aging. JoAnn was an excellent speaker, and those present enjoyed her presentation.

Special thanks to Bowie's Market for donating great refreshments, the First Baptist Church for providing our meeting space, Dick Whall who made our posters, the Bradford Police Department who loaned the screen and projector, and all others who helped bring this meeting together.

The next Senior Rally meeting will take place on September 18 from 1:00-3:00pm at the First Baptist Church Vestry in Bradford. The Nominating Committee has presented a slate of officers, and welcomes anyone who wishes to put their name in to call Lynne at 938-2664, or Betty at 938-2640. Voting will take place at the meeting, followed by a roundtable discussion.

As we enter the new millenium it is particularly important for seniors to come together to support one another, learn better ways to increase our independence and improve our health. Attending Senior Rally meetings is a good way to learn information about services and issues that affect seniors, especially new health care regulations and how to access needed health care services. If we don't have the answers, we will find them together.

—Betty Perron

## Battling Drought

Flowers are wilting and trees are turning brown. Is there anything we can do? "It depends on how severe the drought is," says A.J. Dupere, coordinator at the Urban Forestry Center in Portsmouth. "Each tree is different, but nothing's going to do very well when we have extended periods with little rain." Symptoms that your trees aren't getting enough water are easy to recognize. Leaves begin to wilt and turn brown. You can help smaller specimens through the drought by watering and mulching, but it's nearly impossible to supply enough water for large established shade trees. On a summer day, a large tree can move several hundred gallons of water through the roots, up the trunk, and out the leaves.

"Newly transplanted trees are at the highest risk. It's important to keep an eye on them," explains Cheryl Smith, UNH Cooperative Extension Specialist in Plant Health. "When it gets to be 90-95 degrees and very sunny, it becomes critical to water trees that were planted within the past three years, two times a week if you can." The key to watering is to match your schedule with the amount of local rainfall. A newly transplanted tree needs about 10 gallons of water a week. Provide this water if we aren't getting an inch of rainfall each week. Over-watering your trees is just as damaging as drought, warns Smith. "A common mistake in dry conditions is to over-water new trees. What you're actually doing is drowning them." They shouldn't be watered at the trunk, but towards the ends of the branches at the "drip line". This is where the roots collect the majority of water. Also, don't water your trees at a high pressure. When the ground is dry, it has a harder time absorbing water. High-pressure water will just run off, leaving your trees just as needy as they were before. The best way to water is to turn on your hose and let it soak into the ground around your trees.

Aside from newly transplanted trees, those already under stress are susceptible

to damage. Where healthy trees can recover from drought damage, the chances of recovery for weak ones are less encouraging. There is little to be done. When looking at the forest around you, keep in mind they too are affected by lack of water. Periodic short-term droughts are common in New Hampshire's forests, helping trees adapt. Adaptations include thick leaves often with a protective coating, early leaf drop and deep root systems. While lack of water isn't good for trees, the vast majority will recover from droughts. Some common native trees have shown themselves to be more resistant to drought than other trees. You may find them in your forest resisting the effects of the lack of rain quite well. They include eastern red cedar, white spruce, red pine, pitch pine, eastern white pine, quaking aspen and northern red oak. Next year, during planting season, keep them in mind as good candidates for planting on your home grounds.

—Lee Ann Carlson

## Fourth of July Parade Committee Meeting

There will be a meeting of the Fourth of July Parade Committee on Wednesday August 4, at 7:15pm at the Bradford Town Hall. The Committee invites anyone with comments on this past year's parade to attend.

—Debbie Lamach

**Thistle and Shamrock Inn**  
& Restaurant


11 West Main Street, Bradford, NH  
05721

*"Red and Breakfast Accommodations"*  
**CASUAL GOURMET DINING**  
EVERY WED. THRU SUN.  
FROM 5:30PM

*The dress code is*  
**casual.**


SO, COME RELAX AND ENJOY  
CHEF JIM HORGAN'S  
**TEXAS**  
**BARBECUE**  
**BUFFET**  
EVERY THURSDAY NIGHT THRU  
AUGUST.

**938-5553**



**Ayer & Goss**  
FUELS

**24 HOUR SELF SERVICE  
GASOLINE & DIESEL PUMPS**



*Serving the area's heating needs for more than 51 years*  
FUEL OILS & LPGAS / COMPLETE HEATING SERVICE

**938-5335**

Route 114, Bradford • Hall Ave., Henniker... 428-3333



**Then...** by Milly Kittredge

A note from Laura Sanborn's collection says this is Fred West's ox. Joe Sanborn took the picture and the post card was made in Germany for Danforth Bros. The poem on it by Fred Myron Colby, a Warner author, exalts "Behind the lazy oxen the farmers house their hay. While pleasantly the sunbeams upon the meadows play." We can assume Fred Myron was not out in the heat with the hay and chaff getting inside his clothing, pitching the hay far and up, nor was he stepping on ground wasp nests.

From the two wheels and oxen and the hayricks with the horse, we have come to tractor-pulled mowers, rakes, tedders and balers. (And no more comments about round bales and cattle not getting a square meal.) It still takes a person out in the sun to take care of each phase of the hay gathering operation. The chaff and dust have not been genetically bred out of the hay yet, nor has the weather been controlled to strike the balance of enough rain and sun at the right times. There is still something that can make the back ache more than sitting at the computer.



**Public Notice**  
**Town of Bradford**  
**Conservation Commission**  
 A public hearing regarding the conservation easement for the Aiken Pasture Town Forest will be held at the Town Hall on Tuesday, August 17 at 7:30pm.

**French Farm Greenhouses**



*growers & purveyors of top-quality plants*

Farmcart open thru mid September • Located at the Country Spirit Plaza  
 Corn, tomatoes, cukes, potatoes, pumpkins, melons and more  
 Rte. 114, Henniker • Open Mon. thru Fri. 10-5, Sat. 9-1

At the Greenhouse • Perennials • Roses • Trees & Shrubs  
 1000 big, beautiful Mums ready in late August

Open Daily 9-5  
 27 French Road, Henniker (603) 428-3383  
 follow the signs from Rtes. 9 & 202



**JUST REDUCED!**



**LAKE BLAISDELL.** Waterfront cottage. 2 bedroom plus loft, cozy kitchen and bath, comes mostly furnished. A year-round cottage for only... **\$99,000**

**Ann C. Hallahan Real Estate**  
 Route 103 / At Covered Bridge, Bradford  
 938-2020 Web page: heartofsunapee.com  
 E-Mail: coveredbridge@conknet.com

# Outside

by Ann Eldridge

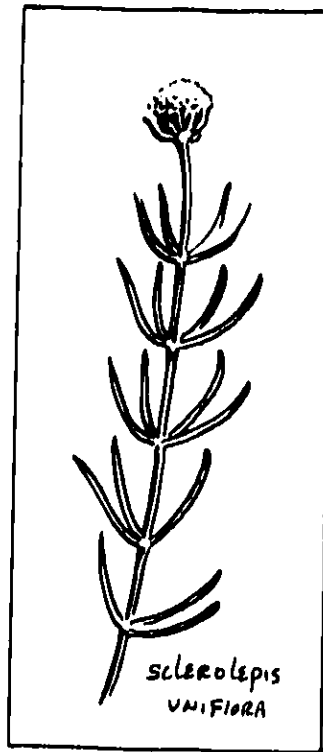
Resting in a cabinet at Harvard University's extensive herbarium is a sample of a small plant. Its label reads "Sclerolepis uniflora - F. T. Lewis, Bradford Pond, Warner New Hampshire, 1905". This marks the first official record of this plant to be found in New Hampshire. Lewis that year was prowling about the Mink Hills and down to Lake Massasecum, then known as Bradford Pond, studying the plant life. Lewis may not have known what town he (or she?) was in but he did know an unusual plant when he saw one. Sclerolepis can be found elsewhere on the southern coastal plain of the eastern U.S. more commonly south of NJ. In New England it only occurs at Wallum Pond on the Massachusetts/Rhode Island border and at Lake Massasecum.

What makes Massasecum so special to this plant? Massasecum is itself unusual in that it was formed post-glacially some 10,000 years ago in a huge sand and gravel deposit. It is a relatively shallow, acidic lake with extensive sandy shores that are buffeted by wave action and fluctuating water levels. This creates a unique community of plants that are adapted specifically to these conditions. If you think about it, most pond/lake shores in NH are rocky in their natural state.

And how did Sclerolepis get there in the first place? One possible explanation is that migrating waterfowl serendipitously transported fragments on their webbed landing gear.

Another explanation for this plant's appearance goes something like this: at some point near the turn of the century, someone living perhaps in the vicinity of Wallum Pond a hundred miles to the south, the next closest and still unusual occurrence of Sclerolepis, visited Lake Massasecum. They brought with them an aquarium complete with the local vegetation. Some was released into the waters of Lake Massasecum. It is possible that there were more people migrating up and down the eastern seaboard who could not be deprived of the companionship of their aquatic pets than I have previously imagined. A combination of the "duck foot" and "turtle howl" theories may be likely.

Be that as it may, Sclerolepis, a member of the enormous aster family is abundant in Lake Massasecum. It is a spindly plant that quietly possesses the interesting characteristic of being dimorphic. This means that the same species takes two distinctly different structural forms. For the Sclerolepis, one form is totally aquatic, reproducing vegeta-



tively and covering large areas of the lake floor with soft greenery looking much like a vast evergreen forest when seen from an altitude. When this aquatic form is washed ashore or stranded in a dry season it changes shape, becoming a stout, more upright plant which may then flower.

Here comes the next mystery. On Massasecum the Sclerolepis has never been known to produce viable seed. It is possible that these plants are one giant clone of a single fragment of Sclerolepis that for whatever reason is not self-pollinating? Perhaps it is missing a specialized pollinating insect. Normally at Massasecum, flowering occurs around Labor Day. Does cold weather or rising water levels interrupt the cycle? Because of this year's unusually dry weather conditions the

Sclerolepis has been shore-stranded for a longer period of time and is flowering now. We just might find out whether it is the weather that prevents Massasecum's most unusual plant from going to seed.

And if you were wondering all along, Sclerolepis uniflora is pronounced "sclair-oh-leap-iss-you-nih-flor-a". It is a plant in need of more than just the scientific name.

Thanks to Deb Dunlop, a botanist living in Newbury, for her help with this article.

COOKIES ♥ MUFFINS ♥ SCONES ♥  
 CRUMBLE & MORE ♥ GOURMET COFFEE ♥ GIFTS

Stop by and have a great cup of coffee and a delicious baked good or shop for someone special.  
 We have mail order cookies.  
[www.sweetpatch.com](http://www.sweetpatch.com)

RTE. 103 • SO. NEWBURY, NH  
**938-2296**  
 OPEN 8 TO 5 EVERY DAY

Luncheon Sandwiches Served Here All Day or Boxed to Go

CRUMBLE & MORE ♥ GOURMET COFFEE ♥ GIFTS  
 COOKIES ♥ MUFFINS ♥ SCONES ♥

**Under New Ownership!**

**HENNIKER VETERINARY HOSPITAL  
 PROFESSIONAL ASSOCIATION**  
*Small Animal & Equine Practice*

Alyssa J. Brust D.V.M.  
 Robert A. Brust D.V.M.

24 Hour Emergency Service • House Calls Available  
 Henniker, New Hampshire • Tel. 603-428-3441

...and for those of you who are wondering -  
 Luke the Hospital Cat has decided to stay on  
 and keep us company!



*Congratulations to Bradford's 11-12-year-old team, which placed second in the 1999 league tournament. The team was coached by (left to right) Phil Adams, Mike Hague, Bill Hall, Carl Cooley and Bob Messer. Below, Christopher Hague, Ryan Cragie, Drew Hankins and Matt Kohan made the 10-year-old All Star team, coached by Alan Cragie and Michael Kohan. Great job, boys!*

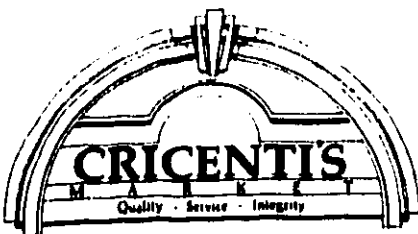


**New London Rotary Scholarship Fund Festival**

On Saturday, August 21, the New London Rotary will sponsor a Scholarship Fund BBQ Festival, Antique and Classic Car Parade and Raffle. The parade begins at 4:00pm and will travel down Main Street in New London. The BBQ will be served on the town common at 4:30pm with music by The Kearsarge Community Band, games, and ongoing entertainment. This event will benefit the Scholarship Fund for Kearsarge Regional and Sunapee High Schools. Advance tickets cost \$10, and will be \$12 at the event (children under five are free). Call Paul Bidwell at 763-9151 for more information.

*E. Harris Realty has moved to Warner. We thank Bradford for their faith in us over the years. We would like to continue serving you in the future. Look for us beside Town Hall.*

*E. Harris Realty*  
456-6161



New London 526-6951

**Fresh Meats  
&  
Produce  
Fresh Fish  
Fresh Deli Items**

## Lake Massasecum Improvement Association

On Saturday, July 10 at 9:00am, the Lake Massasecum Improvement Association (LMIA) held its annual meeting at the Casino. During the election meeting, a new president and treasurer were named. The officers and directors for the 1999-2000 year will be: President, Barbara French; Vice President, David Currier; Secretary, Joan Dorn; Treasurer, Molly Young; Directors, Ed Snow, Al Mosley and Dick Keller; Immediate Past President, Candy Bradley. The LMIA will hold a "Pot Luck" supper on Saturday, August 7 at 6:00pm in the Casino. All are welcome. Please bring a dish—main, vegetable, salad or dessert—that will feed 8-10 people. Beverages will be supplied. A speaker from the New Hampshire Department of Marine Safety will discuss the new regulations as well as boating safety in general. This will be a great chance to ask all those questions you may have.

The Labor Day Lake Lighting will be on Sunday, September 5 at 8:00pm. Flares may be obtained at the Casino, and at the Dorn, Mosley, Keller, Marshall or Joyner homes. Flares are \$2.50 each and last 30 minutes.

The ongoing Milfoil program is progressing well. Thanks to grant money from the USDA and NH DES plus town and LMIA donations, we have been able to secure the services of three "School to Work" students, Andy Glum, Ed Hodges and Ross Kossick and supervisor Jim Carmody. The crew spends three days a week clearing mil-

foil from the barrier net and the beaches at the north end of the lake. They are removing batches of milfoil from the cove and transporting it to an upland location. Brian Carter designed the harvester used for this part of the project. Jen Drociuk, an intern from NH DES is here two days each week to identify new infestations, as well as to supervise a house-to-house education program with the assistance of Molly Young. The Police Explorer Troop is again assisting at the boat landing during the weekends.

We still need volunteers to staff the boat landing during the week in peak hours, as well as to monitor sections of the lake for new patches of milfoil. If you can help with this, please call Candy Bradley at 938-2550.

Just a reminder that 1999 dues are due at the cost of \$10 per household. Also, donations to the Milfoil Fund are always gratefully accepted. Thanks to the lake community's generosity, we are keeping this "beast" in check and hopefully will find a way to control and eventually destroy it.

—Candy Bradley

## South Newbury Union Church News

Final plans are being made for the Ninth Annual Church Fair on Saturday, August 14. The Fair will begin at 9:00am on the grounds of the Friendship House in South Newbury. There will be a fantastic raffle, the famous Chinese auction, line dancing instruction with Grace Nelson (from 2:00-3:00pm), and a "Best Baked Bean" contest (come, taste, vote—to enter call 938-5915). We will have lots of food, entertainment, a book browse, flea market, children's games and vendors. There will be something for everyone. We will top off the day with our great Chicken Barbecue from 5:00-7:00pm, for \$6. Take out and delivery will be available, call 938-5369.

—Gail Bostic

## Soo-Nipi Audubon Chapter


Are you looking for whimbrels, godwits, egrets and knots? Then join birder Fred Sladen on a trip to the New Hampshire seacoast on Saturday, August 14 to look for these and other migrating shore birds and waders. Participants will visit Seabrook, Hampton and Rye salt marshes, tidal pools and beaches. Please meet Fred at exit 9, I-89 Park and Ride in Warner at 8:00am. Bring binoculars, lunch and a scope if you have one. There may be some wet walking. For more details call 526-4321.

—Phyllis H. Curtiss

## Summer Solitude Exhibit

The Gallery at MainStreet BookEnds of Warner presents "Summer Solitude," an exhibit by many local artists and a limited five-week exhibit by renowned photographer and wood sculptor Richard Johnson of Peterborough. The exhibit will be on display through August 12. Hours are every day from 9:00am-6:00pm.

**DUMONT'S BARBER SHOP**  
Wednesdays 8:00-6:00  
Main Street Denis Dumont, Owner

 Septic System Designs  
Test Pits, Perc Tests  
Site Assessments  
Land Planning  
Permitting

**ROBERT C. STEWART, Jr.**  
938-2256 Main Street

**AutoCraft**  
Automotive Services & Sales

**938-2623**

State Inspections  
24 Hr Road Service & Towing



**FOR THE BIRDS!**


We keep the feeders full so we can see indigo buntings, goldfinches, rosebreasted grosbeaks and more. Chipmunks, doves and cardinals eat up the spills!

Foxchase, Assisted Living  
Route 114  
South Sutton, NH 03273  
or call (603) 938-5111

**Martin Energy**

\* \* **COAL** \* \*

Ask about our new & used stoves  
Hand Fired Heating Units  
**938-5531**



**Delicious Pizza**

Lunch Specials, Salads, Steak Subs,  
Italian Dinners, Spaghetti, Grinders,  
Gyro Subs, Calzones, Pockets,  
13 flavors of PREMIUM ICE CREAM

**Pizza Chef of Bradford 938-2600**  
Corner of Rtes 103 & 114

**Planning Board Notes**

The Board continued to address the Site Plan Review application from the Lake Massasecum Campground by reviewing a letter from the Town attorney that dealt with the question of whether or not a Special Exception would be required before the Site Plan Review could proceed. The Zoning Ordinance allows expansion of an existing non-conforming use only by Special Exception. The letter from Attorney Bates stated that, in his opinion, the Special Exception is necessary, using 54 campsites as the base number that existed prior to the adoption of the Zoning Ordinance in 1989.

Based on this advice, the Board agreed to hold a joint meeting/hearing with the Zoning Board of Adjustment, after the ZBA receives an application for the Special Exception. A letter to this effect was hand delivered to Bob Laurendeau, owner of the Campground, in order to expedite the process.

At the meeting on July 27, Chair Teele read into the record a letter from Laurendeau's attorney stating that, in his opinion, no expansion has occurred since enactment of the Zoning Ordinance and therefore, neither the Special Exception nor the Site Plan Review are required. After discussion, the Board agreed to forward this additional material to Town Counsel and request that he meet with the Board and the Selectmen to discuss options for accomplishing the requirements of the Town regulations.

In other business, the Board approved a five lot subdivision on Hogg Hill; conducted preliminary consultations regarding boundary adjustments with the Massasecum Timber Corporation and with Carol Adams on Blaisdell Hill Road; approved a driveway access permit on West Road; and discussed forms that might be used to alert the Code Enforcement Officer when an approval has been granted that would necessitate application for a building permit.

—Marcia Keller

**Arts Council Seeks Artists for Percent for Art Project**

The New Hampshire State Council on the Arts seeks sculptors, mural painters, artists interested in large-scale work in all disciplines, clay tile artists, and designers, for *Percent for Art* projects at the New Hampshire State Prison in Berlin, North Country artists are particularly encouraged to apply. A public meeting to tour buildings and sites for artwork/craftwork is scheduled for Thursday, August 5 at 9:00am. Members of the Site Advisory and Art Selection Committees (which includes the Project Architect) will be present to explain the project and answer questions.

Artist Services Coordinator, Audrey V. Sylvester, said, "All interested artists are encouraged to attend this 45-minute walk-through. All artists should wear trousers or slacks (no skirts are permitted), and heavy-soled shoes. Photos may only be taken at street level at the East Milan Road entrance. "Requests for Proposals" will be distributed at the meeting. For directions to the site or "Requests for Proposals" for artists unable to attend call Audrey V. Sylvester at the NH State Council on the Arts at 271-2789.

*TOUR. Continued from page 1*

Memorial Scholarship. The hope the first year was to raise about one thousand dollars toward the scholarship that would benefit a deserving individual with a desire to continue his or her education in the Kearsarge area. All expectations were surpassed when the event raised in excess of four thousand dollars.


This year, the tour has twenty riders. These dedicated men and women will be riding a 230-mile tour. Tour de Stu will take place on September 9-12 beginning in Bethel, ME. It will continue through the White Mountains, traverse the Kancamagus highway, enter the beautiful state of Vermont and glide across the Connecticut River and finally end at the New London Common. Everyone is invited to celebrate as the riders cross the finish line.

Anyone interested in making a donation may send it to Tour de Stu, P.O. Box 720, New London, NH 03257; voice mail 526-TRAX.

**Hugo's Electric, Inc.**  
*Licensed & Insured*  
 RESIDENTIAL • COMMERCIAL  
 938-5573  
 3191 State Rte 114, Bradford

938-2315      40,000 BOOKS  
**Books by the Lake**  
*Buying & Selling*  
*Quality Used Books in Most Fields*  
 Route 114 at Lake Massasecum  
 Wed-Sun 10:00-5:30

**YOGA**  
 Gentle Stretching,  
 Centering and Breathing  
 Tues 10am -- \$10/class  
 Drop-ins Welcome  
**The Gathering Place**  
 128 East Main St Bradford 938-5780

 **THE GOLDEN PINEAPPLE**

Yankee Candles	Toiletries
Beanie Babies	Boyd's Bears
Byers' Choice	Dept. 56
Seraphim Angels	Jewelry
Cat's Meow	Windchimes
Salmon Falls	Town pottery
Resin figurines	Fountains
Calligraphy prints	Welcome slates

*A gift from The Golden Pineapple is a reflection of your fine taste.*  
 Open every day      428-7982  
 Loc. Rts. 202/9 & 127, at the blinker beside the highway in Henniker  
 Open every day 9:30-5:30, Evenings Thursday & Friday until 7:00pm

  
**Country Spirit**  
 RESTAURANT & SALON  
 428-7007

Certified Angus Prime Rib  
 Real Hickory Smoked BBQ  
 Prime Rib  
 Freshest of Seafood  
 Vegetarian Entrees  
 Open Daily 11-9  
 Fri & Sat 11-10  
 VISA/MC



## From the kitchen of Lesley Marquis

Can you believe this weather? This is the hottest summer I remember since our arrival in August 1991!

This is a wonderful summer dessert for "easy, but impressive" entertaining.

### WHITE CHOCOLATE FRUIT TART

¾ cup butter, softened  
½ cup confectioners' sugar  
1 ½ cups all purpose flour  
White chocolate filling (recipe follows)  
Fruit topping (recipe follows)

Heat oven to 300°. Beat butter and confectioners' sugar until light and fluffy; blend in flour. Press mixture onto bottom and up sides of 12-inch round pizza pan. Bake 20-25 minutes or until very lightly browned. Cool completely.

Prepare white chocolate filling and spread on cooled crust. Cover and chill.

Prepare fruit topping. Cover and chill assembled tart.

#### White Chocolate Filling:

10 oz. pkg. white chocolate chips  
¼ cup whipping cream  
8 oz. package cream cheese

In microwave safe bowl, microwave chocolate chips and cream on high for 1-2 minutes, or until chips are melted and mixture is smooth when stirred. Beat in cream cheese.

#### Fruit Filling:

Use sliced ripe peaches, strawberries, raspberries, blueberries and kiwi. Arrange over filling. Brush filling with warm apple jelly to glaze. Chill until serving.

Serves 10



## BOOK REVIEW

by Pauline Dishmon

### THE LOCKET

Richard Paul Evans  
Simon & Schuster, 1998

When author Evans was sixteen, his high school sociology teacher gave him an assignment to visit a nursing home resident every week for the duration of the course. The woman he visited was named Lucille. Their first meeting was awkward as he looked at the woman who was older than his grandmother. Two months later when the assignment ended, the woman died. In *The Locket*, we meet a blind woman, Esther Huish and we come to know Michael Keddington, a student, and learn about his problems and his love story.

The setting is Ogden, Utah. Michael Keddington has interrupted his education to look after his mother. When the mother dies, Michael takes a job in a nursing home while awaiting a college scholarship. The summer before all of this, he met a girl from a well-to-do family. Her name is Faye and, from the start, the girl's surgeon father is against Michael. Faye's father believes the young man is not good enough for any of his three daughters. Not only that, he speaks negatively about Michael to doctors who are to determine winners of the scholarship.

Most of the story action takes place in the Arcadia Nursing Home where Michael ministers to the aged. Michael gets along well with the patients and becomes a true friend to many of the people he cares for. There is much activity at the nursing home. A black man, Henry McCord, is beaten and Michael is charged as the culprit. There is Alice, who, out of spite, causes a serious problem; Amanda Epperson, a public defender, and a trial at which time Faye returns and blind Esther Huish leaves Michael a gift.

Proceeds from this author's children's books go to The Christmas Box House International, an organization he founded, dedicated to building shelters and providing services for abused children.

*The Locket* is available at the Brown Memorial Library.

**the LUMBER BARN, Inc.**

Route 114 • Bradford  
(603)938-5161 • (800)287-9889

**Power Equipment**  
Sales • Service • Rentals

Stihl & Husqvarna  
forest & garden  
power products

Tools & Safety Clothing

**Lumber**  
Millwork • Plywood  
Treated Lumber  
Roof & Floor Trusses  
Masonry Supplies  
Kitchens

**Building Materials**  
Fru-Test Paints & Stains  
Glass & Screen Repairs  
Makita Power Tools  
Garden & Lawn.  
Electrical & Plumbing Supplies

**Hours**  
Monday - Friday: 7am - 5pm  
Saturdays: 7:30am - 5pm

## Selectmen's Meetings in July

**July 12.** A resident met with selectmen regarding his timber tax. He believes the town has billed him for excess volume and indicated some of the timber was of poor quality. He has contacted the state timber monitor (Dennis Thorell) to perform a field audit of the amount of timber harvested. Selectmen indicated an abatement would be issued if the quantities were in error, but that the timber tax was still due on the billed date. The selectmen would consider abating fees and interest on those amounts in question, but only after the audit was complete. The assessment is on the stumpage and not the condition of the timber when brought to the mill, therefore, reducing the amount of the tax on wood held too long for transport does not fit the assessment definition.

Chip Meany, building inspector, met with selectmen and reported he had recently met with Mr. Laurendeau of the Massasecum Campground regarding the unauthorized additions on trailers at the campground. Mr. Laurendeau indicated he has notified all the campers of the tax implication of adding on to the trailers, and that they will be taxed if the structures are not removed for the winter. Mr. Laurendeau will help prepare a list of the trailer owners.

Chip Meany also discussed the building and renovations at Cobblepond Farms. The work on the store needs a permit and the current and former owners have been notified of the necessity. Removal of walls has created structural questions. Meany feels an engineer needs to review the structure to determine if a safety hazard exists. Mark Goldberg was also present and reminded selectmen of the requirement for commercial buildings to have approval from the fire marshal. He indicated no occupancy permits for commercial or new housing should be issued without inspection by the fire chief. Selectmen will pursue.

Marcia Keller and Candy Bradly of the Lake Massasecum Association discussed the milfoil workers with the selectmen. Three students will work up to 120 hours each har-

vesting milfoil from the lake. A teacher consultant paid by the association, an intern and a biologist from the state will also work with the students. A harvesting machine will cut the milfoil and afterwards mowing will cover the lake bottom in an attempt to block the light and keep the weed from returning. The association asked that a portable toilet be placed on the boat ramp with funds included in next year's budget. They also requested no swimming or picnicking be enforced at the boat ramp. Selectmen will research the issue of jurisdiction—town or state—on the boat ramp issue.

An appointment for Jack Meany to part time police officer was signed by selectmen.

Milly Kittredge was commended for the work she supervised with the adult diversion workers in July. The front and side of the Historical Society were scraped and painted, the Center school house was scraped and painted and cemetery fences at Sunny Plains and Durrel cemetery were scraped and painted. French's Park also had workers, supervised by Jane Lucas of the Parks and Recreation committee. Clean up will continue in coming weeks.

Drainage plans for the parking lot of Pizza Chef and Merrimack Farm Store were discussed. Cooperation with the state in modifying the culvert system promises to yield a solution to the long time problem.

A 25% reduction in the town's property liability insurance will allow the town to place replacement insurance on the town's fire equipment and still realize a \$6500 savings.

Selectmen met in non-public session to discuss personnel issues. The non-public session minutes were voted sealed pending employee response.

**July 26.** Selectmen discussed the need to repair or replace the overhead door at the highway shed which was damaged by a town truck. Insurance claims will be filed if the cost exceeds \$1,000.

The Selectmen's Office will be closed August 4, 11 and 25 for budget training. Part time help may be used to provide coverage for at least two hours each of the days if the budget permits.

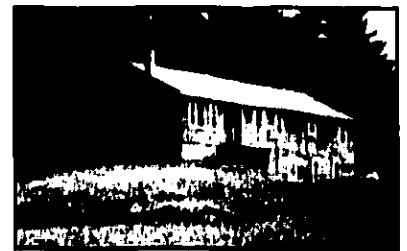
## Police Report

Summer is fast coming to a close. Any resident who wishes to be placed on our winter house check list should please come to the Police Department and fill out the appropriate paperwork before leaving at the end of the summer.

The Department handled 314 calls for service (eight of which were arrests) between June 17 and July 27. The breakdown is as follows: three alarm activations, five ambulance calls, 11 animal complaints, five assists to the Fire Department, 20 assists to other police departments, four attempted suicides, one bad check, two burglaries, three checks on welfare, 19 citizen assists, one civil problem, one damage to property, three driving while intoxicated, two family offenses, two found property, one harassing communication, six incident/services, one juvenile offense, four keep the peace calls, two lost properties, one motor vehicle accident with personal injury, four motor vehicle accidents-no injury, two noise complaints, one case of obstructing police, one paper service, 46 parking violations, one property crime, three protective custodies, two simple assaults, six stranded motorists, six suspicious person/vehicle calls, five thefts, 31 traffic citations, 89 traffic warnings, one untimely death, 11 vacation house checks, one violation of a protective order, eight weapons permits.

—Pennie Spooner

### Bradford



**BRADFORD.** Clean and neat with all large rooms, newer FHW/Oil heating system, access to Lake Todd, 4 plus bedrooms, 1 1/2 baths, nice big back yard. Must see. Nice property. Well built.

**\$125,000**

**ELLIOT HANSEN ASSOCIATES**

◆ A REAL ESTATE COMPANY ◆

**603-763-9999**



## APPLESEED RESTAURANT

*Overlooking Lake Todd*

**"2-fers" Tuesday, Saturday & Sunday**

**We have ice cream! 5-9pm**

Friday Night Seafood Buffet is BACK!!! 5-9pm  
**NEW EXTENDED HOURS Tuesday-Sunday 5:00-9:00pm**  
 Don't forget our Sunday Breakfast Buffet 9:00-noon

Route 103, Bradford, NH \* Member, Bradford Business Association \* **938-2100**

# August Calendar

## MONDAY, AUGUST 2

Bradford Cemetery Commission, Town Hall, 9:00am

## TUESDAY, AUGUST 3

ZBA, Town Hall, 7:00pm  
Bradford Fish & Game Club, Gillingham Drive, 7:30pm

## WEDNESDAY, AUGUST 4

Jeopardy summer reading program, BML, 2:00-3:00pm  
Library Trustees Meeting, BML, 7:00pm

## SATURDAY, AUGUST 7

Bradford Artists & Artisans Exhibition, Bradford Elementary School, 10:00am-4:00pm

## SUNDAY, AUGUST 8

Bradford Artists & Artisans Exhibition, Bradford Elementary School, 10:00am-4:00pm; reception 2:00-4:00pm

## MONDAY, AUGUST 9

Selectmen's Meeting, Town Hall, 7:00pm

## TUESDAY, AUGUST 10

Planning Board, Town Hall, 7:30pm  
Bradford Revolving Loan Committee Meeting, Candlelite Inn, 7:00pm

## WEDNESDAY, AUGUST 11

Jeopardy summer reading program, BML, 2:00-3:00pm  
Bradford Area Community Center Governance Board Meeting, Church Vestry, 9:00am

## THURSDAY, AUGUST 12

KRSD Meeting, Simonds Elementary School, 7:00pm  
BEOC Meeting, Town Hall, 7:00pm

## FRIDAY, AUGUST 13

Bradford Community Corporation Meeting, Town Hall, 7:00am

## SATURDAY, AUGUST 14

John Singer Sargent Exhibition Bus Trip, meet at Bradford Elementary School, 7:30am  
Summer Fair, Deering Church, Rt. 149 Deering, 10:00am-2:00pm

## MONDAY, AUGUST 16

BBA, Church Vestry, 7:00pm

## TUESDAY, AUGUST 17

Conservation Commission, Town Hall, 7:30pm

## WEDNESDAY, AUGUST 18

Road Committee Meeting, Town Hall, 7:00pm  
Library Trustees Meeting, BML, 7:00pm  
Country Capitalist Meeting, call 938-2787 for details

## THURSDAY, AUGUST 19

New Year's Weekend 2000 Festivities  
BACC Exploratory Committee Meeting, Town Hall, 7:00pm  
Parks and Recreation Meeting, Town Hall, 7:00pm

## MONDAY, AUGUST 23

Selectmen's Meeting, Town Hall, 7:00pm

## TUESDAY, AUGUST 24

Planning Board, Town Hall, 7:30pm

## FRIDAY, AUGUST 27

Bradford Community Corporation Meeting, Town Hall, 7:00am  
Reiki Clinic, donation, The Gathering Place, call Peg at 938-5790 for appointment, 7:00-9:00pm

## SUNDAY, AUGUST 29

Center School Alumni meet, Center School, Noon-3:00

## SATURDAYS IN AUGUST

Bradford Historical Society, Old Post Office, 1:30-3:00pm or by appointment, call 938-5386 or 938-5380

## MONDAYS IN AUGUST

Thistle Spinners, every Monday 1:00-3:00pm, Thistle & Shamrock Inn. All are welcome to attend; come and learn a new craft

**To list events for the September calendar, please call Betty Hague at 938-2722.**

# Classifieds

FREE. Light yellow electric stove top and wall oven unit with fan, working condition. Gas stove and sink with cabinets for camper. Large wooden frame screens 3 @ 45" x 52", 3 @ 54" x 66". Call 938-5539.

FOR SALE. 1994 Subaru 4 WD wagon, power, AC, 53,000 miles, mint, \$9400. Call 938-5310.

FOR SALE. California king size water bed, excellent condition \$100 or BO. Call 938-2978(evenings).

FOR SALE. 1986 Saab 900, one owner, meticulously maintained, all service records available. Great 2nd car. 220K miles \$2500 firm call 938-2056 evenings.

USED CAR NEEDED. High mileage ok if passes inspection, call 938-5182.

FREE. Baby goats! 2 very friendly gentle Toggenburgs, 5 months old and wethered. For more information, call 938-2562. Please save them from the butcher!

FOR SALE. 1992 Plymouth AWD van with 107,000 miles, built-in baby seats, \$3500, call 938-2562.

HELP WANTED. Need an after-school job? High school/college student wanted after school 3-4 weekdays. 3-5pm to care for 9 and 11 year old kids. Good salary, driver's license desired. 938-2562.

FOUND. Teletubbie doll at reggae concert at Bradford Center on Saturday, July 24, call 938-2692.

WANTED. Line Dancing instructor for Parks & Recreation program. Call 938-2570.

FOR SALE. 1997 Honda Fourtrax, 90cc, 2WD. Scant 15 hours of use. \$1,900. Call 938-2911.

FOR SALE. Upright Amana freezer, 23 cu. ft., good shape, runs fine. Call 938-2505.

**To place a FREE classified ad of 40 words or less, please call Corey Rodd at 938-2692.**

## Bradford Bridge September deadlines

Display ads	August 20
Classified ads	August 26
Articles	August 20*
*If you would like to submit an article covering an event occurring after the deadline, please call Lyn Betz at 938-5029.	