

THE BRADFORD BRIDGE

PROJECT

John Gloddassis
See page 11

Volume 9, Number 12; Issue 102

December 1999

Ribbon Cutting Ceremony at Brown Memorial Library



A ribbon cutting ceremony will take place on Saturday, December 18, at 10:00am celebrating the opening of the new, expanded Brown Memorial Library. For over a year now, architect Peter Tennant and builder Brass Construction have met regularly with trustees and librarians to assure that the new building was constructed as intended. Since ground breaking on April 16th, the site has been a hive of activity. Said one library trustee: "Our architect, builder and crews are fantastic. They worked extremely well together and performed well beyond the call of duty. They put in long hours to give the Town a beautiful and functional library within a tight budget."

Maggie Ainslie, Librarian, said, "Since the first money was set aside for a larger library in 1970 (\$198 earned at a bake sale), we have been planning and working to make this hap-

pen. This is the day we have all been waiting for."

For the first time in its 106 years, the library will be handicapped accessible. There are many visible new features, including: a handicap lift, a children's area, a study area for young adults, an adult reading area, computer stations, more room for books and other materials, a handcrafted circulation desk, and accessible bathrooms. Not-so-visible new features include all new wiring, new water and septic systems, emergency lighting and efficient radiant heat.

The first public library in Bradford was set up in 1893 in a millinery store in a private home on Main Street owned by Almira Hall, the first librarian, and now the home of Francis and Donna Page. The name Brown Memorial Library honors James S. Brown, a Manchester painter who married Carrie Hoyt of Bradford

and gave \$2,000 to the Town towards construction of a library building. After John E. French offered to match town funding, the original building was erected on the site of the old Presby House hotel, and dedicated on October 7, 1932.

Regarding the new expansion, one trustee said: "We are so grateful for the tremendous good will and support from all the people in our town and beyond. Contribution of time, dollars, materials, and expertise by the librarians and staff, our generous public, private and business donors, the Friends, volunteers, public officials and our talented architect and construction crews have made the new expanded library possible. So many people gave more than expected."

The Ribbon Cutting Ceremony is open to all. Refreshments will be served. For more information, please call library trustee Sue Bunis at 938-5051.

—Audrey V. Sylvester

New Year's Eve Celebration

Welcome the year 2000 at the newly renovated Bradford Area Community Center on Friday, December 31 from 7:30pm until 12:30am. Bring your neighbors and friends along to greet the year 2000.

Appleseed Inn Caterers will prepare a delicious dinner to be served at 8:00pm. Dancing with DJ Rob Duolos of Henniker will include music from the 1940s through the 1990s. Bradford's own Molly Clark, the One-Woman Show will provide entertainment. Door prizes will be awarded.

Tickets for adults are \$25.00 per person and are available at Dodge's General Store & Video Pursuit, Bowie's Market, Sunshine Farm, The Trading Post in Newbury, H&H General Store in Newbury, Sweet Patch Café and Bakery in Newbury, The Sutton Free Library and Sugar River Savings Bank in Warner.

Public Kindergarten Vote in 2001

Public kindergarten remains a high priority for the School Board and for district professionals. The merits for a public kindergarten remain strong. Current research continues to show the contributions of kindergarten to learning and sustained achievement through the grades. The Educational Funding Law continues to support kindergarten. Enrolled students are included in the educational grant received by the towns from the State. Funding for classroom construction also remains at 75% reimbursement for the next two years.

The Kearsarge Regional School Board decided not to

bring the kindergarten program to a vote by the public for approval until March 2001. March 2000 is felt to be too early in the State educational funding changes for the citizens to feel comfortable with adding new educational programs. It was felt that, in light of the renewed funding debate, voting for new programs this year would not be prudent.

To all of you that support kindergarten and to all parents of pre-schoolers, please be advised that you will see this question on the ballot in March 2001.

—Jean Richards,
Superintendent of Schools



Above and beyond...

Sue Vitale, president of the Women's Club and a volunteer on the Rescue Squad, put in extra hours to help repaint the town's fading road signs. The signs, donated by the Women's Club several years ago, will eventually be replaced with reflective metal signs to meet new state requirements.

Obituary

LOUIS P. FOSILLO

Louis Peter Fosillo, 78, of Newburyport, Massachusetts died on October 25 at his home with his family. He and his wife, Mary Ann (Zammiti) Fosillo, celebrated their 50th wedding anniversary on September 4. Born in Newburyport on October 14, 1921, he was the son of the late Michael and Mary (Cugino) Fusillo, and was a graduate of Newburyport High School, Class of 1939. Mr. Fosillo served with the 116th Division of the Navy Construction Battalion—the Seabees—during World War II. A welder by profession, he had worked at the Groton Shipyard in Groton, Connecticut, and the Portsmouth Naval Shipyard before going to work for the Newburyport, Massachusetts Department of Public Works. For six years, Mr. Fosillo and his late brother Joe owned and operated the former Fosillo Body Shop. Mr. Fosillo and his wife were the owners and operators of Lake Massasecum Casino Park and Campground in Bradford.

In addition to his wife, he is survived by a daughter, Judith A. Stanley of Amesbury, Mass.; a brother, Michael Fosillo of Palm Springs, Fla.; a sister, Raffaella of Newburyport, Mass; four grandchildren, Dawn Marie Nelson of Henniker, N.H., Kellie A. Quinn of Amesbury, Mass., Mary Jane Flanagan of South Hampton, N.H., and Henry R. Stanley of Amesbury, Mass; and several nieces, nephews and cousins.

Soo-Nipi Audubon Chapter

On Friday, December 10 at 7:30pm, the Soo-Nipi Audubon Chapter will provide the opportunity for professional and amateur photographers to show a few of their slides from trips taken to natural areas. The program is entitled "Slide Potpourri." Subject matter may include wildlife, both flora and fauna, camping or boating trips to wilderness locations and scenic vistas.

A silent auction fundraiser will follow. Please bring unwrapped donations of natural history items to the program. The meeting will be held at St. Andrews Episcopal Church on Gould Road in New London. Refreshments will be served. For details, call Gary Stansfield at 863-8737.

For the tenth year, the Soo-Nipi Audubon Chapter will participate in the National Audubon Society Christmas bird count on Saturday, December 18. The 15-mile wide count circle includes Sunapee, New London, Newbury and parts of Springfield, Newport, Croydon and Goshen. If you have an interest in birding, consider joining a group of volunteer observers. If roaming the countryside is not for you, a tally of your feeder birds is equally important. In 1998, a total of 43 species and over 2,700 birds were counted, which included a late sighting of a belted kingfisher.

At day's end, participants meet over supper to compile results of birds seen in fields, roadsides, waterways and feeders. These numbers are recorded in the winter issues of "New Hampshire Bird Records" and the National Audubon Society publication "American Birds." This data gives scientists long-term insight into the health of our bird populations and the environment. For details or to volunteer, contact Gary Stansfield at 863-8737.

—Phyllis H. Curtiss

"Fun Dance" Every Friday

A "Fun Dance" will be held every Friday at the Bradford Town Hall, starting December 3. There will be a group fitness dance for all ages held from 7:00pm until 8:00pm. A social dance will follow starting at 8:00pm and is open to all. Music will be provided by "Fun Dance" hostess Molly Clark; (oldies to today's hits). You are also invited to bring your favorite CD.

Expect a friendly atmosphere; the dress is casual. Both couples and singles are welcome, no partner is needed. There will be lots of mixer and group dance—so everyone dances! This fun activity is sponsored by the Bradford Parks and Recreation Committee. For more information call Molly at 938-5978.

The Bradford Bridge
P.O. Box 463
Bradford, NH 03221
Telephone: 603-938-5029
FAX: 603-938-5702
Email:bradfordbridge@conknet.com

VOLUNTEER STAFF:

Lyn Betz, Editor & Publisher
Meg Fearnley, Assistant Editor
Denise Fairbank, Ad Manager
Debbie Lamach, Business Manager
Carey Rodd, Classified Ad Manager
Betty Hague, Calendar Editor
Vern & Marion Hall, Subscriptions
Gene Schmidt, Advertising Sales
Mark Fairbank, Advertising Sales
John & Elinor Robie, Distribution
Milly Kittredge, Archivist

Subscription Information

For those wishing to receive the Bradford Bridge by mail, the annual subscription price is \$12 to cover the cost of mailing. To subscribe, please send a check to the address above.

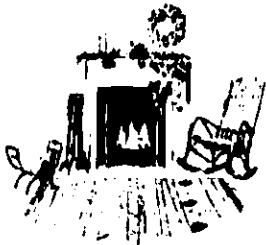
Advertising

The Bradford Bridge is a free community newspaper supported by advertisers. To place an ad, call Denise Fairbank at 938-2973 or send a FAX to 938-5263. Ad deadline is Dec. 20.

Submissions

The Bradford Bridge is written by neighbors, for neighbors. Anyone is welcome to submit articles and/or photographs of interest to the community. Send articles or letters to Lyn Betz at the address, FAX number or e-mail address above by Dec. 20.

Need a home
for the holidays?



We may have just
what you're looking for.
Call us today.

STEWART
AGENCY

Main Street, Bradford
938-2255 or 938-2256



AutoCraft

Automotive Services & Sales



938-2623

State Inspections
24 Hr Road Service & Towing

BEOC Update

Momentum is not lacking as the members of the BEOC sort the "puzzle pieces" in the Bradford Green/Downtown Revitalization projects. In fact, we need your ideas and, in a moment, I will explain how. As we head toward the end of the year, I thought a moment was necessary to reflect on where we have been and where we are going. The diligent work on the Master Plan led to the publication and discussion of the "what ifs" and the Charette report. Without a moment wasted, the Conservation Commission dug into wetland issues with three studies, while the town voted affirmatively at town meeting to continue the Bradford Green work. The ideas and dreams for Bradford had started simply: a notion of bettering the community. Now those very dreams have taken life in the action of so many throughout the town.

Presently, the BEOC is working hand-in-hand with the Department of Environmental Services (DES) to get access to and reclaim usage of the strategically located Marshall property. The second expert to visit and share his experience is speaking at the January meeting of the BEOC. This solid waste expert will explain what activities are realistic to expect on or near the present landfill site in what is envisioned as the future Bradford Green. Look forward to my straight-from-the-hip review

of this critical meeting to understand what Bradford's next step will be.

At our last meeting, beautification of Main Street also came to the table in a hearty discussion. We all agreed that many of the continuing efforts rely on individual homeowners, landlords and business owners to care for their property. After each of us has pruned our petunias, we can move on to talk about sidewalks, common theme signs for businesses, street light options and even the dreaded water and sewer issue to name a few improvements. All of these topics need your assistance to help guide the BEOC and other groups to research the many options available. This is where your ideas are essential.

The BEOC is putting together an "Ideas for Rejuvenation" form to be available to all residents. We will be distributing these forms to be returned with your ideas for improvements. Help us out with details, research you may have done or just an opinion to aid in our direction. Perhaps you have a "pet project" you would like to take on, or an idea from which you think Bradford would profit. No idea is ever too small or large to consider and with patience, diplomatic drive and the foremost virtue of improving Bradford, I fail to see how any good idea would go unnoticed.

—Stephen Manley

News from the Town Clerk/ Tax Collector's Office

October 18. Izabella Rose Von Beron was born to Beth and Russell in Concord.

November 20. Eugene Baer and Catherine Casey were married in Hopkinton.

The final tax bills were sent out November 19, 1999 and will be due December 22, 1999. You should have received a total of three tax bills.

The Town Clerk / Tax Collector's office will be closed December 24, 1999 for the Christmas holiday. The office will be closed December 31, 1999 for the New Year's holiday. Marilyn and I wish all of you season's greetings.

—Sue Pehrson

Bradford Historical Society

The Old Post Office can be opened by request; call 938-5386. Meetings and Saturday hours will begin again in April. Filing, sorting, and compiling goes on throughout the winter. Old information or memorabilia about Bradford is welcomed.

The Bradford Town History, *Two Hundred Plus*, makes a wonderful gift and copies are available by calling 938-5386.

—Milly Kittredge

Glimpses... selected from Historical Society materials by Milly Kittredge

December, 1899... Low prices to reduce a large stock: good, sound onions, 37 cents bu., nutmegs, 36 cents lb., good molasses, jugs free while they last, F.H. Messer Store "We barely escaped a green Christmas, it is quite good sleighing on some of the roads," reports the Pathfinder and Visitor of Dec. 28, 1899.

Check us for your Holiday Party Supplies
and Boxed Card Assortments



Debbie & Bernie wish you the
best the season offers!



BRADFORD GENERAL STORE

Since 1795



R.L. Dodge
Company


Hallmark
warm wishes

**HOLIDAY
FAIR**

at KRES at Bradford

Saturday, December 11

9:00am-2:00pm

Book Fair • Raffles
Famous Cookie Walk
All types of Vendors for
One Stop Shopping
Kid Craft Tables & More!

Curious Creatures Show

at 10:30am

Hands-On Interactive Program
featuring
Rainforest Reptiles
& Friends

Bring your camera &
take pictures with your
favorite reptile!

Sponsored by the Bradford PTC

Letters

To the editor:

I have noticed a petition around town that I find very puzzling. I have no idea who initiated it, nor do I care. It just surprises me that it even exists. I just can't understand why people would sign a petition to "repeal the Keursarge Regional School district charter for official ballot voting." They obviously don't understand how it works. All the charter did was allow thousands of people to vote on the school warrant items that are "money" items in their hometown. It sure beats giving 200 to 300 people, that have an agenda, control over carefree spending of the other 7,700 voters' and taxpayers' money.

The deliberative session still exists. We vote on articles that are not monetary and we can amend articles at the session. All that was done that is different, when the Charter was passed, is that after all the discussion and amendments at the deliberative session, we can go back to our towns and vote! We don't raise our hands; we put an "X" in a box. Elderly people that cannot sit for hours can vote. People that work can vote. Is it more democratic when 300 voters vote or when over 2,000 vote? Why would you want to disenfranchise several thousand people? There isn't a building in the district that can hold even one third of the registered voters in the district.

I encourage people to really think about signing that petition. I know that I wouldn't.

Dick Vitale

Letters to the editor should be no more than 400 words and may be edited for clarity and content. All letters must be signed and include a telephone number for verification.

BWC Update

Many thanks to Marcia Strout of Sunshine Farm and Elinor Harris from E. Harris Realty for answering questions about antiques at the Women's Club meeting on November 16. A good time was had by all.



Super thanks go to the members of the St. Peter's Masonic Lodge for the use of the Lodge for the Annual Antiques and Craft Fair on November 26, 27, and 28. This was truly a gesture of neighbor helping neighbor. Thank you to Claire Bensley for the Christmas tree, Alma Clinton for the wall hanging and Pizza Chef for the large pizza. It was my pleasure to donate the Twelve Days of Christmas tree skirt along with these other prizes for the raffle.

Please join us for our Annual Tree Lighting Ceremony in front of the library at 5:00pm on Saturday, December 4. On the following Saturday, December 11, all children are invited to meet Santa Claus at 4:00pm in the Baptist Church Vestry to have cookies and a photo taken with Santa. Merry Christmas to all!

Hope to see you New Year's Eve at the Community Center Celebration.

—*Sue Vitale*

MainStreet BookEnds Exhibit

MainStreet BookEnds in Warner presents an exhibition of local artists working in wood, stained glass, clay, watercolors and oils, including the original works of Jeremy Guitar, Byron Carr, David Carroll and others. This exhibit will continue through the holidays. The Gallery is open Monday through Friday from 9:00am until 9:00pm, and Saturday and Sunday from 9:00am until 6:00pm. Call 456-2700 for more information.



From the kitchen of Lesley Marquis

It's a Christmas tradition...gifts from the kitchen. Every year, the week after Thanksgiving, my friend Carolyn comes up from Rhode Island. We spend the day Christmas shopping in Woodstock, Vermont. Upon our return, we pull out the recipes we've saved from our many years of friendship. We spend the remainder of our time together making herbal vinegars and mustards, toffee, and homemade liqueurs. Nothing says "love" more than something homemade!

BUTTER BRICKLE

- ½ lb. almonds, ground fine
- 1 lb. chocolate, grated
- 2 ½ cups sugar
- 1 lb. butter
- 4 tablespoons light corn syrup
- 1/3 lb. almonds, chopped
- 1 cup water

Spread one-half of the ground almonds on an ungreased cookie sheet. Spread one-half of the grated chocolate over the nuts.

Combine the sugar, butter, corn syrup, and the chopped nuts with the water in a heavy saucepan over medium heat. Stir with a wooden spoon until it reaches 280° on a candy thermometer. Remove from heat. Pour over the nuts and chocolate layer. Cool 10 minutes. Add remaining nuts and chocolate. Cool completely. Break into pieces and place in decorative holiday gift tins...and Happy Holidays from The Rosewood!

Carpet ♦ Vinyl ♦ Ceramic Tile ♦ Hardwood ♦ Area Rugs

NEW LONDON ♦ FLOORCRAFT

and Creative Kitchens

Carl & Gail Olson
Route 11, Wilmot

526-2800
800-870-4646

SUPERGLASS 1-800-
WINDSHIELD REPAIR 803-5266

Rock Damage Repair & Scratch Removal
Kerry Kiltredge Owner/Operator

428-7076

Wright Travel

WORLDWIDE TRAVEL ARRANGEMENTS
Henniker Mini-Mall Nancy Wright
Main St., Henniker Manager

Update Report of the Bradford Y2K Preparedness Committee

With year and millennium fast approaching on a non-appealable deadline, Bradford appears ready to face the dreaded Y2K bug. After extensive study, interviews and information collection, the committee has concluded (and agrees with the state and federal government) that there is no likelihood of significant and life-threatening interruptions in power or other essential services as a result of Y2K computer problems.

The Committee met with representatives of PSNH and Merrimack Valley Telephone and was reassured that both companies had the issue well in hand. Indeed, PSNH was more concerned about a possible lack of demand for power as the New Year arrived because of the number of people planning to go on self-generated power that evening. (As a precautionary note: there is no cause to turn your generators on unless and until the power goes off, and then make certain you are disconnected from the main line before you connect your generator!) There is some possibility of some isolated short-term problems arising from load balancing, but these are expected to be quickly resolved.

The Committee held an informational meeting on Friday, November 19, where Jim Van Dongen, PA manager from the NH Office of Emergency Management gave an overview of state efforts in the Y2K preparedness area. He stressed that, while Y2K may not pose a serious threat, we remain subject to ice storms and snow emergencies and we should have an emergency preparedness plan in place for such eventualities. We also had briefings from the Board of Selectmen, the Police and Fire Departments and the Rescue Squad about their preparations.

While there might not be as much of a Y2K problem as was originally feared, the work put into emergency preparedness was not in vain. As part of its efforts, the Y2K Committee (due to the efforts primarily of Dick Whall and Perry Teele) has prepared maps of the town showing houses and street addresses for use by emergency units in locating dwellings. The goal is to establish a neighborhood based watch system following the philosophy of the Red Cross Neighbor Help Neighbor proposal. During an emergency, each region of the town would have a local warden knowledgeable about special needs of his or her neighbors, and who would undertake to stay in communication with those people and the neighborhood watch program in the event of an emergency.

Key points of the program include: Preparation of a scaled Neighborhood Watch Map for each street or road in the

Town showing the location of each house plus its 911 identification number and occupant's name (Phase 1). Solicitation of a volunteer occupant of each road to serve as a Neighborhood Watch Street Warden (Phase 2). The street warden would be the sole possessor of the knowledge of special need households for his street and would be responsible for checking up on special needs people during an emergency. S/he would provide the liaison with the involved Town emergency agencies. The Town Emergency Coordinator, the Police Department, the Fire Department and the Rescue Squad would have restricted issue compilations of all Street Warden Maps so they could respond to a warden's request for assistance or to any 911 emergency. The Police Department will be responsible for updating Street Warden Maps as well as the Emergency Response Compilation Booklets.

The Street Warden and Emergency Forces Compilation Booklet (Phase 1) has been completed thanks to the assistance of the Senior Rally Group, the Postmaster and many others. Now we are ready to implement Phase 2 and get volunteers to serve as street wardens and backup wardens. We will place signup sheets at the Selectmen's Office at the Town Hall, in the Police De-

partment office, Lake Sunapee Savings Bank, Dodge's General Store and the Post Office. Alternatively you can call Dick Whall at 938-2650, Sue Vitale at 938-2852 or Betty Perron at 938-2640.

—Richard Whall & Daniel Coolidge

Senior Rally Update

The Senior Rally's next meeting is scheduled for December 11 at 1:00pm at the First Baptist Church Vestry on Main Street in Bradford. The topics for discussion at this meeting will be planning for the nomination of officers and the scheduling of programs in anticipation of our move into the Community Center.

The January meeting will be held on January 22 at 1:00pm at a place to be announced prior to the meeting. The guest speaker will be Nancy Lyon, president of the New England K-9 Search and Rescue. She will be accompanied by her two certified rescue dogs, Keeper and Trace. All seniors from Bradford, Newbury, Sutton and Warner are invited. Refreshments will be served. For further information call, 938-2640 or 938-6009.

—Genie Palm

OPEN HOUSE

SUNDAY, DECEMBER 5 * NOON TO 5 PM

At Bradford's Main Street Courtyard
Antiques & Artist Tree



Cider & Cookies
 DOOR PRIZES

NEW
 Christmas cards
 from Marian Biron

We'll be glad to gift wrap any
 item purchased during the
 Open House Absolutely FREE!

124 East Main St
 938-5045

The Gathering Place

Gifts for
 Body, Mind and Spirit

NEW!
 AURIC BLENDS
 Fine Essential Oils
 GREAT GIFT IDEAS!

FREE Herbal Tea & Ginger Cookies

DOOR PRIZES

AURA
 PHOTOGRAPHY
 \$20 includes photo,
 reading and 2-page
 computer printout!

SIGN UP EARLY FOR THIS ONE!

128 East Main St
 938-5790

FUN FOR EVERYONE! SPECIALS & PRIZES! DON'T MISS IT!

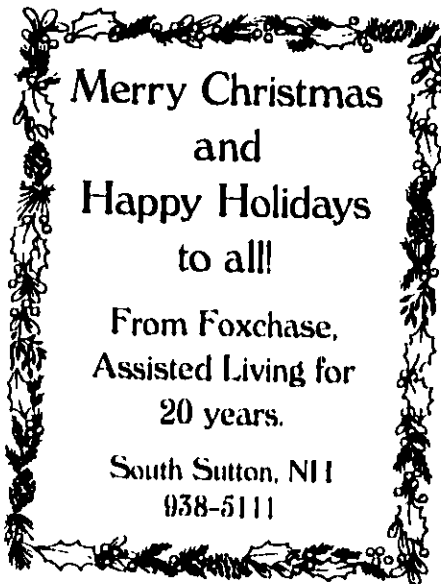


Church News From Lynne E. Hubley

The annual Advent Craft Day, better known as "children's make and take crafts" will be held Saturday, December 4 from 10:00-11:30am. Children will make decorated bags, lifesaver dolls, snowflakes, candles, swags, candy and cookies. They will enjoy hot cocoa and doughnuts for a snack.

Youth Group children in grades four through twelve are invited to come Christmas Caroling down Main Street on Saturday, December 4, from 3:00-5:00pm. A Christmas party will be held after caroling. There will be a chance to make Christmas cards for the Christmas baskets that go to the needy.

The Ham and Bean Supper will be on Saturday, December 4 (serving between 5:00 and 6:00pm). Entertainment and a



Attention Homeowners!!!
If you want to sell,
NOW is the time!!!
Call Colby-Linehan today.

 **Colby-Linehan
Real Estate, Inc.**

P.O. Box 173 • Warner, NH 03278
603-456-2344

Christmas sing-a-long will be held at 6:30pm. Tickets are \$6.00 for adults and \$3.00 for children 12 years old and under. Tickets are on sale at R.L. Dodge, Merrimack Farm Store, Bowie's Market and the Church or may be purchased at the door.

The American Baptist Women's Ministry will hold their meeting on Tuesday, December 7 at 7:00pm. From 7:00-7:30pm there will be a brief business meeting and stockings will be stuffed for the children at the Christmas Eve Service. Ladies are invited to bring a new toy to donate to Toys for Tots. At 7:30pm, the Cantalina Quartet will perform, with Leanne Beck on flute and oboe, Ann Paine on flute and clarinet, Debbie Lamach on the organ and piano and Allan Treadwell singing. This performance is OPEN TO THE PUBLIC. Refreshments will follow the meeting.

The Food Pantry will be open on Saturday, December 18 from 10:00-11:00am so that Christmas baskets can be distributed in addition to the monthly baskets. The Food Pantry Committee would like to thank all of the people who donated food and money for the Thanksgiving baskets. Thanks to your generosity, 31 baskets were delivered.

On Sunday, December 19, the children and adult Sunday schools will put on a program entitled "My Gift for Jesus." Each child and adult will have selected a symbol representing a gift they will present to Jesus in celebration of His birthday.

The Women's Christian Guild will meet at the home of Judi Mott on Monday, December 20 at 10:00am. They will wrap Christmas presents for a needy family and enjoy a Christmas luncheon together.

The special Christmas Eve candlelight service will be held on Friday, December 24 at 7:00pm.

Real Estate Hints: Preparing your Home for Sale by Laura Hallahan

Many people ask what they can do to make their house more saleable. Begin by taking a visual tour of your home as if you were a potential buyer. You'll see improvements that need to be done as well as cosmetic changes you may want to make. Depending on the season, keep the lawn mowed and raked, the driveway and walkways shoveled. Have a potted plant or tree outside the door or a pretty wreath on the door to welcome people to your home. Keep a clean home and remove excess clutter. Store things neatly in a closet or under a bed. Fix a leaky faucet or a door that sticks. Consider painting faded walls and professionally cleaning all the carpets.

Take a sniff test. If the house smells stale or there are pet odors, open some windows and use a commercial spray to keep the house smelling fresh and welcoming. Make sure all the lights work so that each room can be clearly seen. Open curtains or shutters for natural light as well. Do not have pets in the house. If they must be around, fence them in the back yard or put them in a kennel with plenty of fresh water available.

Realize that some changes are not necessary. An example would be putting up new shelves in a room. The potential buyer may have a different plan for the room and would just take them down.

Unless you are selling your home on your own, don't be home at the time of the showing. Let your realtor handle this task.

Finally, keep paperwork handy on all major appliances and repairs that you have done to the house.

**DUMONT'S
BARBER SHOP**
Wednesdays 8:00-6:00
Main Street Denis Dumont, Owner

NEW KEARSARGE CORPORATION
• REELS • PALLETS • BOXES •
• SPECIALTY WOOD PRODUCTS •
NKC Breezy Hill Road, Bradford

I Am Now Net
Your Personal Internet Service
Support Your Local Internet Company

@ Better Service - Better Prices @
• 938-2127 •

www.lamnow.net

Bradford-Newbury Workshop

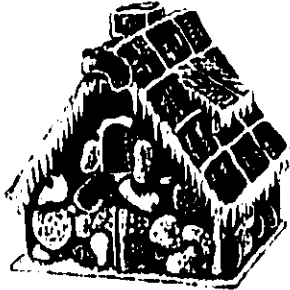
The Bradford-Newbury Workshop will hold its annual Christmas Luncheon on Thursday, December 9 at the Friendship House. Don't forget to bring two gifts; one to exchange with the membership and one for someone at the Haven which should be labeled as to age and sex for whom it is appropriate. Arrival time: between 11:30 and 11:45am.

—Clare Bensley

Gingerbread Workshop for Children

The Mountain Lake Inn is hosting "A Children's Gingerbread Christmas" on December 12 from 2:00-4:00pm. The workshop is open to children age 10 and under. (Parents are invited to watch.)

Registration begins on December 1. A \$25 fee includes all materials. Ten seats are available. Call 938-2136.



PUBLIC NOTICE

The Bradford Conservation Commission will hold a public hearing concerning the acquisition of land on West Meadow Road on Monday, December 13 at 7:30pm at Town Hall.



Christmas Gifts for Everyone

- Birds & Squirrels
- Dogs & Cats
- Boots & Socks
- Pants & Shirts
- Horses & Riders
- Men & Boys
- Women & Girls

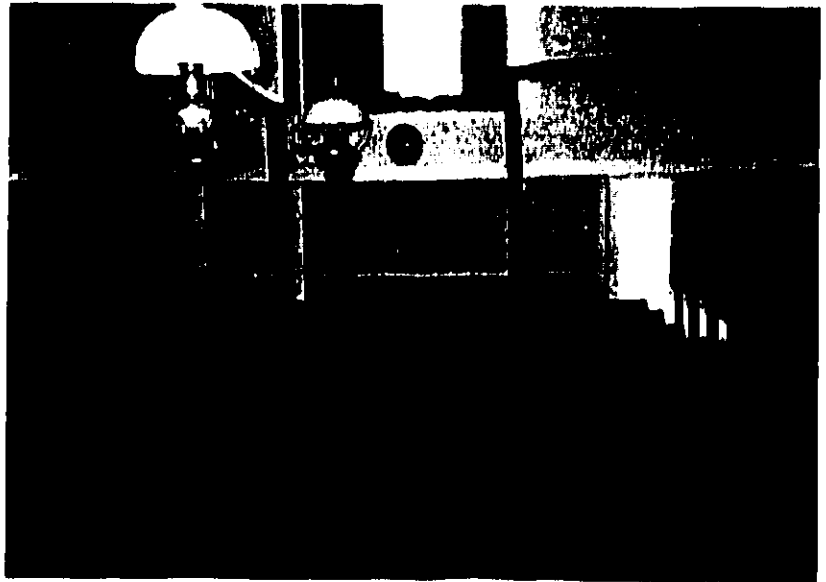
Merrimack Farm & Country Store
Main Street, Box 154
Bradford, New Hampshire
(603) 938-2211

Now... and Now!

by Milly Kittredge



Dedicated in 1830, the First Baptist Church on Main Street is eight years older than the Congregational Church in the Center. The only two churches left in town are a contrast in interior appearance. If you attend the services in either, think that for over a hundred and sixty years, parishoners have sat in just this place at just this time of year and found the dedication, energy, and resources to preserve them both in very different ways.



HAPPY HOLIDAYS

Let Bowie's Market make your holiday feast special

- Prime Rib
- Turkeys
- Shrimp
- Fresh Baked Bread
- Pork Tenderloin
- Roast Beef
- Ham
- Homemade pies & cakes

SEASON'S GREETINGS from the Bowie Family and the staff of Bowie's Market

126 East Main Street, Bradford, NH • 938-5533 • Fax 938-2609
Mon.-Thu. 5:30am-8:30pm, Fri. & Sat. 5:30am-9:00pm, Sundays 6:00am-8:00pm

Report on the Kearsarge Regional School District by Mark Fairbank, Bradford School Board Representative

The budget process is well underway. The school board and the municipal budget committee have met to review the district's budget recommendations. Priorities include a new collective bargaining agreement with the teachers' union (KREA). The district has operated without a contract with the teachers for over a year. This has resulted in a freeze on annual salary raises for last year and the current school year.

Another major issue is the health care plan presently in place for the teachers. The school board and the KREA have each ratified the contract proposal that will appear on the next annual warrant. The school board has also expressed its highest priority on this item to the budget committee for the next presentation to voters. Two major elements of the agreement are a comprehensive salary increase of 2.89% over two years and a transition from the current self-insured health plan to an external provider that will offer teachers three types of coverage: HMO, Point of Service, and Indemnity.

It is anticipated that many will select the Point of Service plan that is comparatively affordable and offers the district the protection of limited liability. HMO plans are proving less popular despite their reduced costs and indemnity plans are generally

markedly more expensive than the Point of Service offerings. Expected savings from this change are at least \$85,000. In recent years, including this year, the district's self-insurance plan has resulted in annual budgetary overruns of over \$100,000. Outsourcing this coverage with an insurance provider will protect the district from such risk.

The annual step raises included in this agreement reflect a relatively modest increase when you consider that the percentage increased is over a two-year period. The average annual increase amounts to roughly \$1,200 per teacher per year. That's less than \$25 per week. The starting salary for a new teacher in the Kearsarge district is near the 60th percentile statewide. The maximum salary for a Kearsarge teacher with a master's degree and seventeen years of experience is at the 82nd percentile statewide. This situation and the fact that we've had no contract in place have made it difficult to compete while recruiting new teachers.

I was proud to listen to the principals and teachers of Bradford-Newbury, Sutton and New London elementary schools present their success with the Bradley Phonics program. This program was explored last year by teachers on professional development time and was reported to hold great promise. The program has been implemented this year. On November 18 Bradford teachers Beth Sargent and Heather Sherwin explained the methods and goals of Bradley Phonics and shared stories of remarkable progress with 1st, 2nd, and 3rd grade students. (As a parent of a 2nd grader, I can attest to the results.) Principal Scott Bouranis, along with teachers Kathy Rohjent, Deb Cossingham and Nikki

Finger, presented a review of the school improvement plan over the past year. Test scores for Bradford students supported the achievements reported by faculty.

Dr. Paul Ezen described a new program at the high school where faculty takes the time to honor the school's Comeback Players. These are students who have shown extraordinary turnaround in behavior, attitude and sense of academic purpose since last year. Comeback Players were nominated by faculty and will be honored at a special luncheon where they will be encouraged to discuss the positive influences that they link to their incredible progress.

Police Report

The Bradford Police Department handled 901 calls for service between October 18 and November 15, 1999. The breakdown is as follows: two alarm activations, six ambulance calls, nine animal complaints, two assists to the Fire Dept., 11 assists to other police departments, one burglary, 693 business checks, 18 citizen assists, one criminal arrest warrant, two cases of criminal mischief, one family offense, three harassing communications, four incident/services, four juvenile offenses, two motor vehicle accidents, one neighborhood dispute, one noise complaint, one open door/window, two cases of operation after suspension, one paper service, one stranded motorist, two stray livestock, six suspicious persons/vehicles, one theft, 29 traffic citations, 46 traffic warnings, 48 vacation house checks and three weapons permits.

—Pennie M. Spooner

Thistle and Shamrock Inn
& Restaurant


11 West Main Street, Bradford, NH
03221

"Bed and Breakfast Accommodations"
CASUAL GOURMET DINING
EVERY WED. THRU SUN.
FROM 5:30PM

The dress code is casual.


Our "Pub Room" is open at
5 p.m. Wed. - Sun

Christmas at the Inn
"Holiday Open House"
Sunday Evenings,
Dec. 5th, 12th, & 19th
4:00 - 8:00 p.m.
938-5553

 Septic System Designs
Test Pits, Perc Tests
Site Assessments
Land Planning
Permitting

ROBERT C. STEWART, Jr.
938-2256 Main Street

Henniker
Pharmacy


Ayer & Coss
FUELS

24 HOUR SELF SERVICE
GASOLINE & DIESEL PUMPS

Serving the area's heating needs for more than 51 years
FUEL OILS & LP GAS / COMPLETE HEATING SERVICE
938-5335
Route 114, Bradford • Hall Ave., Henniker . . . 428-3333

November Selectmen's Meetings

November 1. Diane Gadoury, representing the Revolving Loan Committee, discussed recent membership changes. Scott Walters, formerly representing Lake Sunapee Bank, has left. Neil Cannon has been contacted to fill the vacancy. John Udaloy, another of the bank representatives, also has had difficulty in scheduling the meetings. Deb Sias, with Ledyard Bank, has recently joined the committee.

In other business, the DRA appraisal form for state forest land was signed. Selectmen signed the contract for employee dental coverage and the town received proceeds from the sale of two town trucks at state auction in the amount of \$16,650.00.

November 8. Charlie Betz and Ann Eldridge met with selectmen to discuss the Conservation Commission purchase of land on West Road. The land consists of 42 acres 95% of which is wetlands. The purchase would be funded by the Commission from its land acquisition fund. Betz cited RSA 36-A:4 + A:5 as authorization to use local monies with approval of the Board of Selectmen without the vote of Town Meeting. The selectmen voted unanimously to support the Commission's plan.

Ken Anderson met with selectmen to discuss the transfer station budget. Additional time will be allowed for trash pickup at the Community Center. Part-time help is needed from Memorial Day to Labor Day. Anderson requested the winter hours begin on December 1. The transfer station will be open from 9:00am-4:00pm Wednesday, Saturday and Sunday.

Selectmen responded to the Planning Board letter about the property on the corner of Water and Main Street. The new

owner has not increased the number of apartments. The additional electric meter will handle power to common areas.

Chris Frey reported on the Community Center. The DES has been contacted regarding water testing supplies. The Merrimack County Diversion Group was on site on Saturday and scraped and primed wood and waterproofed the outside of the foundation. They are scheduled to return next weekend.

In other business, an intent to cut was signed for Barry Wheeler. Selectmen voted to adopt the ADA section 504 policy.

November 15. The Parks and Recreation Department made a request to hold dances on Friday nights from 7:00-11:00pm with a charge of \$5.00 per person beginning on December 3.

November 22. A Public Hearing on the Community Center progress was held. Everett Kittredge explained the current status of the operating systems. The well is reconnected, the pump is operating and a water sample has been sent for testing. The furnace is installed and running. Electricity has been connected and the external connection for an emergency generator has been installed. Most of the carpet and tile has been installed. MCT will connect the phone lines for the alarm system next week. Each user group will contact MCT for their own telephone connections.

Parking will be in the rear of the building and will be accessed by a driveway on the left side. The new windows and doors have been installed and the final framing will soon be complete. A completion date of mid December is anticipated. Dick Vitale complimented Everett Kittredge on the fine job he and Chris Frey have done in monitoring the work at the Center.

Charlie Betz updated the selectmen on the land purchase agreement. The title search is in process and fees will be paid from Conservation Commission funds. Betz also discussed a program through the Central NH Planning Commission for trail development. There is no cost to the town and the program will provide the town with some detailed maps of the trail system.


Carol Adams met with selectmen to discuss the purchase of a vacuum cleaner for the Community Center. The BACC board voted to request \$1,400 from the operating budget for the Center. This machine can wash and wax floors and shampoo carpets in addition to regular cleaning jobs. Selectmen agreed the \$1,400 is not available. Marvin Rich questioned Adams about her current position with the BACC and asked for a list of permanent Board members and their term dates.

The Bradford/Newbury Kindergarten Pre-school will have control of their room for times specified in the contract. The area will be available for weekend and summer programs. Similar arrangements will be made with the senior room. Adams asked about the status of the alcohol policy, and the Selectmen confirmed the insurance rider will be carried by the sponsoring group, not the Town.

In other business, the Community Development Finance Authority agreement was signed and Selectmen nominated and voted to appoint Cheryl Kordas as welfare officer for the Town of Bradford.

--Excerpted from public minutes prepared by Cheryl Behr

HENNIKER VETERINARY HOSPITAL
PROFESSIONAL ASSOCIATION
Small Animal & Equine Practice
Alyssa J. Brust D.V.M.
Robert A. Brust D.V.M.
24 Hour Emergency Service
House Calls Available
 Henniker, New Hampshire
 Tel. 603-428-3441



*We have moved
 our office to Warner,
 but we haven't forgotten
 our friends in Bradford.*

*Season's
 Greetings
 from*

E. Harris Realty
 456-6161

Please join the
Trustees
and The Friends
of Brown Memorial Library
at a

Ribbon-Cutting Ceremony



**to REOPEN THE LIBRARY on
Saturday, December 18, 1999 at 10 a.m.
Main Street, Bradford, New Hampshire**

Refreshments
will be served

Handicapped
Accessible

The Trustees gratefully acknowledge the good will and support from the people of our town whose contributions of time and dollars have made the new and expanded library possible:

- Our devoted and knowledgeable librarians and staff
- Our generous donors
- The Friends who provided programs and raised funds
- Our volunteers who gave talks, moved books, worked in the Thrift Shop and helped when needed throughout the years
- Our readers, young and old, who keep the place humming
- Our public officials who asked hard questions and smoothed the path
- With special thanks to our talented architect and construction crews

Invitation sponsored by The Friends of the Brown Memorial Library



John Gioldassis

by Audrey V. Sylvester

In early November, when the Bradford Pizza Chef restaurant relocated to a new building on Main Street at the corner of Route 103, faithful customers adjusted and passersby flocked. Main Street realized another surge of revitalization.

For pizza-maker and owner, John Gioldassis, it was the right opportunity. Finding the right opportunity is a family trait. His family came to America from Greece to Haverhill, Massachusetts for better opportunities. The American Dream was alive: work hard and you will succeed. In the 1960's, his family relocated to New Hampshire in a move precipitated by an uncle's business opportunity—to establish Newport's, *The Village Pizza*. As a 19-year-old, John worked for his uncle, learned the "how to's", and liked what he was doing.

As business expanded to 10 locations in the area, John advanced as owner of the Sunapee Pizza Chef, which he managed for nine years. Following in his uncle's footsteps, John seized an opportunity to branch out. He discovered an available location in Bradford where he thought a restaurant might flourish. To test the market, he leased a space next to the U.S. Post Office, a location that would forecast profitability. His gamble paid off. Since he opened in 1993, business has been good.

When the former Dunforth's Store (a.k.a. IGA) building was "for sale," John weighed options to expand—whether to renovate a building "in rough shape with no basement" or tear down the building and start from scratch. He knows he made the right decision. His smaller, new building (by 3,000-

sq. ft.) fits within the limited parcel of land much better than the old 6,000-sq. ft. IGA. His property now has room for parking and a full basement. John met the challenges of new fire codes, septic and handicapped ac-

times a week from the Boston market; and specialty sauces are made on site.

In addition to basic Italian pastas, spaghetti and meatballs, lasagna, salads, sub sandwiches in all varieties, ice creams and fudge sundaes, Pizza Chef offers a few Greek specialties: gyros (grilled beef and lamb served on a pita fold with onions, tomatoes, and special sauce), salads embellished with feta cheese and olives, and grilled eggplant subs topped with melted provolone cheese.

At Pizza Chef's Grand Opening on Sunday, November 14, John gave out Baklava (a sweet made with paper-thin sheets of pastry, honey and nuts), children's treats, sodas, coffee and balloons. He collected donations for the Bradford Fire Department to

thank them for giving him advice on codes and regulations during construction. The end of his first winter at the new location will be marked by spring improvements. John intends to surround the building with flower-filled planters and trees. Light shining onto Main Street through Pizza Chef's large plate glass windows is a welcoming beacon to passers-by and a bright reminder to the regulars to keep on coming downtown. Bon appetit! Buon Appetito! Enjoy!



cess for a 45-seat restaurant. John designed the building and was his own contractor, sub-contractor and construction manager, a frugal, time-consuming approach that guaranteed construction would meet his high standards.

"Starting from scratch" is what John does each morning when he mixes up fresh dough for Pizza Chef's pan pizzas, a cross-between thin-crust Italian pizzas baked without a pan and layered Greek pizzas. Although he knows how to stretch the dough by throwing and twirling it high into the air above his head, he reserves this dramatic gesture for when school children visit the kitchen. The new oven can bake 100 pizzas in one hour. Large blocks of provolone, mozzarella and cheddar cheeses are shredded daily; salad greens delivered three

It has been a wonderful year!

Ann C. Hallahan Real Estate
wishes you and yours
a safe and happy
holiday season
and we look forward
to working with you in the
new Millennium!

Thank you for your support.

Ann C. Hallahan Real Estate
Route 103 / At Covered Bridge, Bradford
938-2020 Web page: heartofsunapee.com
E-Mail: coveredbridge@comknet.com



New London 526-6951

**Fresh Meats
&
Produce
Fresh Fish
Fresh Deli Items**

Legislative Report

By Representative
Barbara Connor French



On November 3, the House passed HB 999, establishing a uniform education property tax to provide funding for an adequate public education. This bill has a sunset date of January 2, 2003. The sunset provision will provide us with the opportunity to continue working for a responsible school-funding plan.

The bill also provides for hardship grants to those homeowners who qualify. Those who qualify must have an increase in school taxes between 1998 and 1999, the refund must be for their primary residence and they must have resided there for at least one year. A 100% rebate will be available to single taxpayers earning up to \$15,000 and to couples with a combined income of \$30,000. A rebate of 66.6% will be given to single taxpayers earning up to \$20,000 and to couples with a combined income up to \$40,000. A 33.3% rebate will be available for single taxpayers earning up to \$25,000 and couples with a combined income up to \$50,000. The rebate applies only to the first \$200,000 of equalized value on the residence. The hardship grants have a severability provision. This is important because if this issue was to be taken back to court, just that section can be severed from the bill and the rest of the bill can stand alone. The whole bill will not be put into jeopardy and our communities and schools will not face another crisis.

Another important feature of HB 999 is that it allows the state to purchase computer software that will develop a tax policy and forecasting system. The software will help the state to make valid tax projections, something we do not presently have the ability to do.

In Bradford, Beth Rodd and I, along with Senator Rick Trombly, had a constituent's meeting on November 4. Our

guest was Dennis Murphy, Director of Public Affairs for the National Educational Association. The turnout for this meeting was terrific! We will continue these open forum meetings to keep you up to date with your state government. If you have any suggestions for future topics or guest speakers, please let either Beth or me know.

We have scheduled our next meeting for Thursday, December 2 at 7:00pm at the Bradford Town Hall. Everyone is invited to attend. There will also be a meeting in Henniker on Monday, December 6 at 7:00pm at the Town Hall. The speaker will be Attorney Bob Backus, President of Campaign for Ratepayer's Rights. He will speak to us about electric deregulation. I outlined this subject for you in the October issue of the Bridge. This will be a major policy issue that the legislature will be dealing with in the next session.

Keeping with my belief that to be pro-active is better than re-active when dealing with a problem, I have put in a bill to develop a marriage preparation program for New Hampshire. Presently, we have Driver's Education classes for driver's licenses and hunting classes for hunting licenses. Certainly the institution of marriage deserves as much, if not more, of an investment. Rather than just being reactive with divorce and out of a marriage, we ought to be better prepared for entering a lifetime relationship. Marriage doesn't just happen; it takes work. Shouldn't marriage be based on friendship? We need to help our young people see what friendship and commitment are all about. If a marriage has a good foundation, then it can weather the ups and downs.

Another bill that I am co-sponsoring, will establish a committee to study environmental health. The committee will study the

environmental hazards that threaten public health, ecology and the quality of life in New Hampshire. I'm sure many of you have wondered about the connection between the environment and our health. Probably one of the biggest issues that touches everyone's life is cancer. It's a major concern that we have to deal with. Other problems are occurrences of allergies and asthma. These problems have prompted me to look at the issues. As I've watched kids and their families deal with these health problems over the years, I've thought to myself that I'm in a position to do something about it. We need to think about how we as people, businesses and industries can work together with the environment.

Please feel free to contact me, Barbara French, at 428-3366 or Beth Rodd at 938-2692 with any concerns you may have. Have a great Holiday Season.

Fall Concert Series Wraps Up

The Four Corners Grille & Flying Goose Brew Pub Fall Concert series ends with two performances in December. On December 2, Cliff Eberhardt will perform with his striking guitar style and compelling voice. He successfully blends the urgency of rock with the complexity of contemporary folk. This is his only New Hampshire performance showcasing his latest CD, *Your Own Backyard*.

Harvey Reid appears on December 16. Reid is a dedicated master of the steel strings and is a prolific songwriter. His virtuosity with guitars, banjo, mandolin and autoharp is legendary. Shows start at 8:00pm. For show or dinner reservations call 526-6899.

"Last Call" Group Art Show

The Covered Bridge Art Gallery in Contoocook village presents a group show entitled "Last Call" from December 4 through January 30. The artwork in this ten-artist exhibit is reflective of the past millennium and addresses political, social, industrial and environmental issues. The opening reception will be on December 4 from 7:00-9:00pm. Regular gallery hours are Monday-Saturday 10:00am to 5:00pm, closed Sunday and Wednesday. Call 746-4996 for more information.

Country Spirit
RESTAURANT & SALON

1000 Main Street
Bradford, NH 05430

428-7007

Certified Angus Prime Rib
Real Hickory Smoked BBQ

Prime Rib
Freshest of Seafood
Vegetarian Entrees

Open Daily 11-9
Fri & Sat 11-10
VISA/MC

927-4973

Route 114
North Sutton

ALL & AWL REPAIR

Small Engine Sales & Service
Tractors • Harness & Tack Repair
Art, Kirk, Lynno & Kris Chadwick
Hours: Mon-Fri 7:30-5:00, Sat till 1:00

Community Center Will Open in January



The Bradford Area Community Center will offer an assortment of ongoing programs and services starting in January. Some enthusiastic community volunteers are organizing a New Year's Eve 2000 dinner-dance celebration at the Center. Phase I of the building renovation is nearing completion. If you or someone you know would like to offer a program or provide a service please call the Planning and Development Coordinator, Carol Conforti-Adams at 938-2562. If a group or individuals would like to use the Center, there is a building use form that can be completed so we can coordinate a master calendar for the Center. To get one of these forms, call the above number.

A Center operation manual has been completed by the interim Governance Board. The task of creating an operating manual for this building was a huge undertaking. For eight months the interim Governance Board worked continuously to discuss and design this manual. Many thanks to Marion and Vernon Hall, Jane Lucas, Donna Marr, Betty Perron, Susan Sneek, Lynne Smith, Robert Stewart Sr., Phyllis and Dick Whall, Sue Vitale and Phyllis Wilcox for a great job!

In November the Board of Selectmen and the Bradford Community Corporation

Board approved a slate of community members to become the first permanent Governance Board. The eleven members of the Governance Board are Senior Rally Council - Betty Perron, Early Childhood Education Council - Sue Rayno, Bradford Newbury Kindergarten/Preschool Representative - Mike Carter, Youth Council - Yvonne McCormick, Health and Human Service Council - Phyllis Wilcox, Public Relations, Programs, Events and Promotion Committee - Phyllis Whall, Financial Planning and Fund Development Committee - Laura Hallahan, Building Operation and Maintenance Committee - Marion Hall, Representative from the Selectmen's Office - Sue Vitale, Representative from the Bradford Community Corporation - Lynne Smith, Parks and Recreation Representative - Ruth Hall. More community members are needed on the BACC sub-committees and councils. If you are interested please contact the Planning and Development Coordinator or any Governance Board member.

Our October "sneak preview and Flu shots" at the Center was successful. Over 75 people stopped by and expressed their excitement about the Center's multiple usage. The Quilt raffle raised \$1,100 and the winner was Pricilla Knight. Many thanks to quilt maker Charlene Harris.

The "Buy a Brick for Bradford" fund drive for the Center is requesting financial contributions for items to complete the


Center such as equipment for the kitchen including cabinets, tables and chairs for the dining area and a wooden floor for the community room. If you can contribute to this end-of-the-year fund drive or make a financial pledge for next year, it would be greatly appreciated. With the hard work of many community members and generous contributions from local businesses, contractors and individuals, the building renovation was completed with 80% of the money coming from grants and 18% from private sources. Now the town of Bradford has a beautiful multi-purpose building. The people of Bradford should be very proud of this grass-roots community accomplishment.

With the Center opening new challenges will arise. The Governance Board requests that direct honest communication be brought to their attention as soon as possible. They realize the complexity of starting up operations of a cooperatively run building. To be successful they need to have effective communication and community teamwork. The Governance Board has approved a job description that will go to the Corporation with the hope that funding will be secured by grants to continue a stipend for the "Planning and Development" position for the next year to 18 months. If approved, this position will be advertised and a selection process will take place.

---Carol Conforti-Adams

Hugo's Electric, Inc.
Licensed & Insured
 RESIDENTIAL • COMMERCIAL
 938-5573
 3191 State Rte 114, Bradford

938-2315 40,000 BOOKS
Books by the Lake
Buying & Selling
Quality Used Books in Most Fields
 Route 114 at Lake Massasecum
 Wed-Sun 10:00-5:30

 **THE GOLDEN PINEAPPLE**

Exceptional Holiday Gifts!

- ★ Byers' Choice Carolers
- ★ Yankee Candles
- ★ Unique Ornaments
- ★ Lang & Wise Santas
- ★ Wooden Clocks
- ★ Welcome Slates
- ★ Lovely handbags
- ★ Boyds Bears
- ★ Country pottery
- ★ Dept. 56 Villages
- ★ Windchimes
- ★ Cat's Meow Villages

A grand selection of gifts in every price range

Monday-Friday 9:30-7pm 428-7982
 Sat. & Sun. 9:30-5:30pm
 Senior days Mon & Tues.
 Gift wrap & shipping service
 Jct. Rts. 202/9 & 127, at the blinker beside the highway in Henniker

BALD SUNAPEE FLORIST & GIFTS

Route 103 - Newbury Harbor Phone/FAX 763-4551
 Mon.-Thurs. 8:30-5:30 Fri. & Sat. 8:30-6:00 Sun. 9:00-4:00

Just in time for the Holidays!!!!

Our wreaths, trees, garlands and poinsettias are in!!
THIS YEAR WE HAVE OUR GIFT SHOP FULL OF NEW ITEMS, INCLUDING FUN HOLIDAY DECORATIONS

- Cuddly plush animals
- Baskets
- Stained glass
- Designer clay pottery
- Chimes
- Ornaments & more!

Our Floral Department has holiday greens, Boxwood trees, Centerpieces and a large variety of beautiful & unusual cut flowers.

WE WIRE FLOWERS TO FAMILY & FRIENDS WORLDWIDE!

Kearsarge Charter Middle School Update

For the next four months, the Founders Group will be intensifying their efforts to educate the voters about the proposed Charter Middle School. They will be mailing information to all district taxpayers in addition to the parents of fifth and sixth grade students. There will be informational talks at local businesses meetings, PTO meetings, libraries, radio stations and other public meeting areas. Voters can check their papers, town offices and cable message board for the dates of these upcoming programs. People can also call members of the Founders Group to talk about this issue.

The Founders Group would like to respond to some concerns expressed last month in the InterTown Record regarding the Kearsarge Charter Middle School.

During the first year of operation, the KRSD will provide the 50 students who will be attending the Charter School rather than the existing Middle School about \$275,000 out of the \$17 million dollar KRSD budget. This small portion belongs to the student and is what the taxpayers pay to educate that child in the best possible manner and environment. The District still keeps over \$129,000 for overhead for those 50 students.

The Charter School must come up with its own funding for the final 20% per pupil cost that the District does not provide to the Charter School. Each year the District provides 80% by law. The effect upon the existing Middle School budget won't increase every year, it stays the same relative to that 80% per pupil cost.

Because the Charter School will be located on an existing bus route, there will be no additional costs for transportation.

The District and the Charter School will work together to provide services for special needs children. Often the different classroom teaching style and smaller school size lessens the services required for some special needs children.

The Founders Group wants to provide an alternative for those kids that may need a different learning environment within the public school system.

For more information call Mary Mead (456-3262), Kathy Kovacs (456-2182), Ken & Holly Grossman (526-6390).

—Lori Terwilliger



BOOK REVIEW

by Pauline Dishmon

A SECOND CHICKEN SOUP FOR THE WOMAN'S SOUL

Health Communications
1998

There are 101 true short stories in the second woman's inspirational book edited by Jack Canfield, Mark Victor Hansen, Jennifer Read Hawthorne and Marci Shimoff. The book is dedicated to Mother Teresa. Categories include love, attitudes, dreams, marriages, motherhood, making a difference, obstacles, special moments, miracles and across generations.

The first story is titled "The Wallet." The writer, Arnold Fine, finds a lost wallet containing \$3.00 and a "Dear John" letter from a girl named Hannah to a fellow named Michael. The letter was dated 1924 indicating it had been written almost sixty years before. In order to return his property, Fine went to great lengths to track down Michael at a nursing home. Finding Hannah was fairly easy since she lived in the same nursing home. As Michael and Hannah were on different floors, they were unaware of each other's presence at the home. At last there was a reunion which led to marriage vows. Fine was "Best Man" at their wedding.

In the motherhood section of this book is a story about an incident concerning a three-year-old boy named Ry. His favorite game was to dress up like Superman. His costume was made from a bath towel that served as a cape. When his mother enrolled him in kindergarten, his teacher asked for his name. Ry said, "Superman." The teacher smiled politely and asked for his real name. Again Ry answered, "Superman." Sensing he'd have to be straight with the teacher, the boy skid his eyes around the room and answered, "Clark Kent."

This title is one of many inspirational "Chicken Soup" books available at the Brown Memorial Library.

Invites all to our NEW Restaurant



Lunch & Dinner
Open 7 Days 10 to 8

LUNCH SPECIALS ~ SUBS ~ PASTA ~ SALADS
ITALIAN DINNERS ~ CALZONES

"Delicious Pizza"

• Many New Items • Ice Cream • Beer & Wines

DINE IN OR CALL AHEAD
FOR TAKE OUT SERVICE

938-2600

Bradford Pizza Chef at the corner of Rte. 103 & Main ~ Bradford, NH



the **LUMBER BARN, Inc.**

Route 114 • Bradford
(603)938-5161 • (800)287-9889

Power Equipment

Sales • Service • Rentals

Stihl & Husqvarna
forest & garden
power products

Tools & Safety Clothing

Lumber

Millwork • Plywood
Treated Lumber
Roof & Floor Trusses
Masonry Supplies
Kilchens

Building Materials

Tru-Test Paints & Stains
Glass & Screen Repairs
Makita Power Tools
Garden & Lawn,
Electrical & Plumbing Supplies

Hours

Monday - Friday: 7am - 5pm
Saturdays: 7:30am - 5pm

Martin Energy

* * **COAL** * *

Ask about our new & used stoves
Hand Fired Heating Units

938-5531

Outside

by Ann Eldridge

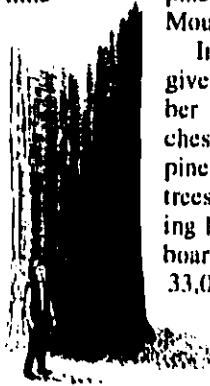
I think I'd been in town nearly five years before I pulled over and took a walk down to the West Branch to see the "Bradford Pines". A friend and I went to see them again recently. The sign on the south side of Rt. 103 announcing their presence is in itself remarkable. It was painted by hand. The wooden sign seems to have lasted now more than twenty years. Today the inscription should read "at the time of the Revolution 223 years ago these pines were small seedlings". The heading on the board exclaims "New Hampshire's Large White Pines". The implication that these are the only large white pines in New Hampshire is very nearly true. There are small groves of big pine in Livermore, Hanover, Durham and a very few other places.

The sign goes on to say that these are "virgin pines". I leave you to speculate on what a non-virgin tree might be. These ten or twelve remaining trees at more than 100 feet in height have just reached middle age and are quite familiar with the rites of pollination at least. A white pine left to grow could reach well over 200 feet tall and 400 years of age. Twice the size and age of the Bradford Pines which, if you haven't seen them yet, are very big trees.

The white pine is a commonplace tree now but this was not always so. Pines grow faster and half again as tall as hardwoods and they need the sun to germinate and thrive. This resulted in white pine settling along the bigger rivers where the banks provided some openings for the lightweight seeds and the valleys provided protection from the wind. The European colonists were justifiably amazed at the size of these riparian pines and, of course, proceeded to cut them down with great speed, or as much speed as you can get without a chainsaw and a skidder.

Special ships were built to haul 100-foot long, three to four foot diameter logs back

to merry old England to be used as ship masts. As the more easily accessible trees became scarce the King decreed in 1688 that all pine over 24 inches at the base were property of the Admiralty and were to be marked with the symbol of an arrow. For a short time at least the settlers may have heeded this edict as it is said that if you study early colonial houses you will find pine flooring of 22" and 23" but not 24". Quite quickly every full-grown pine in the northeast was gone. (One 200-plus foot pine still lives in the Great Smokey Mountains.)



In 1927 Harvard University was given 20 acres of old growth timber on Mount Pisgah near Winchester, New Hampshire. White pine and hemlock were common trees on this tract, the pine reaching 150 feet in height. The average board feet of lumber here was 33,000 feet per acre, or about 10 times the estimated average board feet per acre of today's northern woodlands. And this was only the average. An acre of white pine in this forest could yield an incredible 85,000 board feet. All but a few acres of this tract were leveled in the hurricane of 1938.

When sheep farming became the predominant industry in New England in the first half of the eighteenth century due to the import of merino sheep and stiff tariffs on imported woolens, forests of any size became scarce. (Hence the appearance of stonewall instead of split rail fencing.)

The sheep industry was in decline by the mid-1800s and folks moved west or to the cities leaving behind their pastures, abandoned pasture that was perfect for the sun-loving white pine. Thus pine moved from the lowland river sites to the uplands. Sixty years later the timber industry boomed again on this second growth of fast growing pine. Once these were cut the hardwood saplings that had been thriving in their shade began to dominate again. Attempts to regenerate pine forests for timber were

thwarted by the painstaking necessity of weeding out the hardwoods. In the 1930s, windstorms and the introduction of white pine blister rust from Europe further dampened efforts. Although pine will remain an important part of the logging industry it will probably never attain the importance of that first cutting of old growth timber or the cutting of second growth on old pastureland.

The five-acre site of the Bradford Pines was given to the state in 1951 by the Davis and Symonds Lumber Company. I don't know how it came to pass that these pine and hemlock in Bradford were spared for so long but I'm glad someone had the foresight to leave us a little hindsight into the forest as it once was.

WALCO MECHANICAL CO.

REFRIGERATION, HEATING,
AIR CONDITIONING, ELECTRICAL CONTRACTORS
COMMERCIAL • INDUSTRIAL • RESIDENTIAL

SERVICE • SALES • INSTALLATION

MAINTENANCE PROGRAMS

SYSTEM EVALUATIONS

938-2926

BRADFORD, NEW HAMPSHIRE

LAND LISTINGS

- NEWBURY**—1.36 acres, cul-de-sac location, town road **\$7,500**
NEWBURY—1+/- acre, level lot, septic design for 3 br's **\$9,500**
WILMOT—5 acres, out of the way, great area for camp **\$9,750**
SUTTON—6 acres, blacktop road frontage, potential views **\$14,000**
WARNER—Secluded camp on old Schoolhouse site **\$14,500**
SUTTON—Level lot of 2.29 acres on town road **\$19,500**
NEWBURY—Nice lot of 2.06 acres, driveway roughed in **\$27,000**
SPRINGFIELD—3.6 acres, views of Baptist Pond across street **\$28,500**
NEWBURY—Lake access lots also have nice views **\$38,000**

ELLIOT HANSEN ASSOCIATES

◆ A REAL ESTATE COMPANY ◆

603-763-9999

APPLESEED RESTAURANT

Sunday Breakfast Buffet

Still going strong 9:00am-noon

A nice way to relax on a Sunday morning.

Tuesday-Saturday 5:00-9:00pm, Sunday 9:00am-noon, 5:00-9:00pm

Route 103, Bradford, NH * Member, Bradford Business Association * 938-2100

December Calendar

WEDNESDAY, DECEMBER 1

Library Trustees Meeting, BML, 7:00pm
KRES at Bradford PTC Meeting, Elementary School, 7:00pm

SATURDAY, DECEMBER 4

BWC Christmas Tree Lighting Ceremony, BML, 5:00pm

MONDAY, DECEMBER 6

Bradford Cemetery Commission, Town Hall, 9:00am, call 938-5386 for more information
Selectmen's Meeting, Town Hall, 5:00pm

TUESDAY, DECEMBER 7

ZBA, Town Hall, 7:00pm
Bradford Fish and Game Club, Gillingham Drive, 7:30pm

THURSDAY, DECEMBER 9

BEOC Meeting, Town Hall, 7:00pm
KRSD School Board Meeting, Simonds Elementary School, 7:00pm

FRIDAY, DECEMBER 10

Bradford Community Corporation Meeting, Town Hall, 7:00am
Bradford Area Community Center Governance Board Meeting, Church Vestry, 12:30-1:30pm

SATURDAY, DECEMBER 11

PTC Holiday Fair, KRES at Bradford, 9:00am-2:00pm
Senior Rally Meeting, Nomination of new officers and discussion of upcoming events at the Bradford Area Community Center, 1:00-3:00pm, Church Vestry
Santa Arrives at the Church Vestry, BWC sponsored, come enjoy cookies with Santa and picture taking, 4:00pm

MONDAY, DECEMBER 13

Selectmen's Meeting, Town Hall, 5:00pm
Conservation Commission Meeting & Public Hearing, Town Hall, 7:30pm

TUESDAY, DECEMBER 14

Planning Board, Town Hall, 7:30pm
Bradford Revolving Loan Committee, Candlelite Inn, 7:00pm

WEDNESDAY, DECEMBER 15

Library Trustees Meeting, BML, 7:00pm
Country Capitalist Meeting, call 938-2787 for details
Road Committee Meeting, Town Hall, 7:00pm
Friends of the Library, BML, 7:00pm

THURSDAY, DECEMBER 16

KRSD School Board Meeting, KRMS, 7:00pm
Parks and Recreation Meeting, Town Hall, 7:00pm

MONDAY, DECEMBER 20

Selectmen's Meeting, Town Hall, 5:00pm
BBA Meeting, Church Vestry, 7:00pm

TUESDAY, DECEMBER 21

Conservation Commission, Town Hall, 7:30pm

FRIDAY, DECEMBER 24

Union Congregational Society Children's Pageant, Bradford Center Meeting House, 5:00pm

MONDAY, DECEMBER 27

Selectmen's Meeting, Town Hall, 5:00pm

TUESDAY, DECEMBER 28

Planning Board, Town Hall, 7:30pm

BRADFORD HISTORICAL SOCIETY
Open by appointment, call 938-5386.

MONDAYS IN DECEMBER

Thistle Spinners, every Monday 1:00-3:00pm, Thistle and Shamrock Inn. All are welcome to attend, come and learn a new craft.

To list events for the January calendar, please call Betty Hague at 938-2722.

Classifieds

CUT YOUR OWN Christmas Tree at Between the Mountains Farm on Mountain Rd., in Newbury. \$14.00 takes any tree. Scotch Pine, Spruce, Fraser Fir, and Balsam. More info: 938-5482.

WANTED. Twin mattress in good condition. Call 938-2603.

FOR SALE. 1 pair Clemes and Clemes handcarders, slightly used. Call 938-5742.

FOR SALE. Firewood, cut, split and delivered. \$100/cord or \$60 per half cord 938-6375, 226-9146

FOR SALE. Electric stove \$50, living room woodstove \$289. Call 938-5339.

FOR SALE. 1930's Puritan Kitchen wood/coal stove \$200. 1978 Yamaha snowmobile \$200. Call 927-4497.

USED CAR NEEDED, wagon or sedan, mileage OK but must pass inspection. Call 938-5182.

FOR SALE Antique hand crank, green water pump. Myers. Mint Condition. Call 938-5182

WANTED. Donated working Mac computer for residents at Merrimack County Nursing Home to use. Call 938-2692

FOR SALE, assorted beanie babies. \$6 each. Main St. Bradford. Call 938-2029

To place a **FREE** classified ad of 40 words or less, please call Carey Rodd at 938-2692.



Bradford Bridge January deadlines

Display ads	December 20
Classified ads	December 26
Articles	December 20*

*If you would like to submit an article covering an event occurring after the deadline, please contact Lyn Betz at 938-5029.

Winter Hours at the Transfer Station begin December 1
Wednesday, Saturday and Sunday
9:00am-4:00pm